

HIGHLIGHTS

ADOLESCENT SEXUAL HEALTH

SEXUALLY ACTIVE

In 2019, the percentage of Iowa public high school students who ever had sex was consistent among heterosexual, lesbian, gay and bisexual students. However, those with only partners of the opposite sex were more likely to have ever had sex and more likely to be sexually active in the three months previous to the survey.

- The state rate for high school students who ever had sex was **38%**. This is comparable to the national rate.
- **26%** of all Iowa high school students were sexually active in the three months prior to the survey. For twelfth graders, the rate was **35%**.
- **1 in 5** ninth graders and **1 in 2** twelfth graders ever had sex.
- **8%** of high school students statewide had four or more partners during their lifetime. For twelfth graders, the number climbs to **14%**.



CONTRACEPTIVE USE

Nearly half (48%) of sexually active high students used a hormonal contraceptive method the last time they had sex. **29%** used birth control pills.

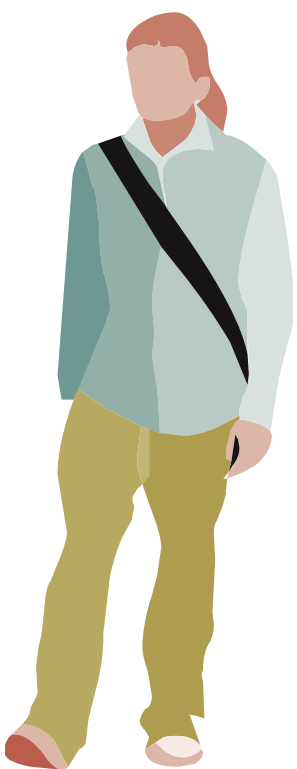
Sexually active Iowa high school students were more likely to use some kind of contraceptive method than their peers nationally. For Iowa students, the rate was **94%**. Nationally the rate was **88%**.

CONDOM USE

Over half (55%) of sexually active high school students used a condom at last sexual intercourse.

SUBSTANCE USE

Fewer Iowa high school students used alcohol or drugs before last sex than students nationally. For Iowa students, the rate was **16%**. Nationally the rate was **21%**.



SEXUAL VIOLENCE

Lesbian, gay and bisexual students experienced sexual violence at rates higher than their heterosexual peers:

- **29%** of lesbian, gay and bisexual students were ever forced to have sex compared to **8%** of their straight peers. This disparity is hidden in the statewide rate of **10%**.
- **27%** of lesbian, gay and bisexual students experienced sexual violence in 2019. For straight students the rate was **8%**. Again, the statewide rate of **10%** hides the disparity.
- Sexual dating violence impacts lesbian, gay and bisexual students disproportionately as well. While **4%** of straight students experienced sexual dating violence in 2019, this was true for **19%** for lesbian, gay and bisexual students.

[HTTPS://IDPH.IOWA.GOV/PUBLICHEALTHDATA/IOWA-YOUTH-RISK-BEHAVIOR-SURVEY](https://idph.iowa.gov/publichealthdata/iowa-youth-risk-behavior-survey)

