

# Recovery Iowa- Sioux City 360

Report provided to the Iowa Department of Public Health,  
Substance Abuse Bureau  
October, 2021



Report by Shawn Dorius, Cassandra Dorius, Matthew Voss, Masoud Nostari, Arielle True-Funk, and Timothy Potter

## Table of Contents

Overview .....	1
What is Recovery? .....	2
What is A Recovery Community Center?.....	2
Is Your Community Recovery Ready? .....	3
What Peer Support Meetings are Available in Your Area?.....	5
What Recovery Resources Are Available in Your Area? .....	6
What Community Resources are Available in Your Area?.....	8
Which Neighborhoods in Your Community Need Additional Health Resources and Support? .....	9
What’s Driving Health Disparities in Your Community? .....	13
APPENDIX 1: Data Used in this Report.....	15
APPENDIX 2: Peer Support Contacts in Your Area.....	23
APPENDIX 3: Recovery Resources in Your Area .....	29
APPENDIX 4: Community Resources in Your Area.....	32

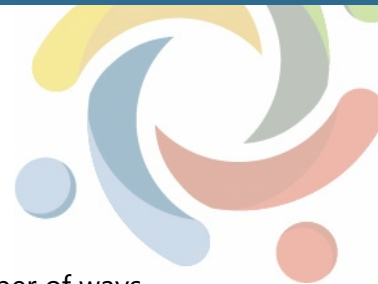
## Overview

At the request of the Iowa Department of Public Health, Bureau of Substance Abuse, the Public Science Collaborative (PSC) developed community-specific reports to support recovery efforts in Iowa. Recognizing the need to strengthen substance use recovery efforts throughout the state, we identified a large number of existing recovery-oriented resources in Sioux City, which we describe and map in the pages that follow. We developed additional maps to identify at-risk neighborhoods that will benefit from targeted health interventions and additional community resources.

For additional questions or information about this report, the data tools described, or the Public Science Collaborative, please reach out to the principal investigators of this study, Dr. Shawn Dorius at [sdorius@iastate.edu](mailto:sdorius@iastate.edu), or Dr. Cassandra Dorius at [cdorius@iastate.edu](mailto:cdorius@iastate.edu).

*Shawn Dorius, PhD  
Iowa State University  
Public Science Collaborative*

*Cass Dorius, PhD  
Iowa State University  
Public Science Collaborative*



## What is Recovery?

Though substance use recovery is an evolving concept that has been defined in a number of ways over the years, an emerging consensus is that recovery is a voluntary path toward improved personal wellbeing coupled with a diminished risk of substance use relapse. As noted by Bill White (2007):

*Recovery is the experience through which individuals, families, and communities impacted by severe **alcohol and other drug** (AOD) problems utilize internal and external resources to voluntarily resolve these problems, heal the wounds inflicted by AOD related problems, actively manage their continued vulnerability to such problems, and develop a healthy, productive, and meaningful life.*

In White's view, resources help individuals, families, and communities in two ways. First, they help address alcohol and other drug-related problems (for example, addiction, unemployment, housing instability, family separation), and second, they support health, productivity, and meaning in post-treatment life. The appeal of this view is that it is explicit and direct in its recognition that recovery involves not only internal resources such as mental, emotional, and genetic factors but also external ones. In thinking about where to focus federal and state resources to develop a network of community-based recovery centers in Iowa, the key question is, "*What kinds of external resources matter most for sustained SUD recovery?*"

*If we knew which resources were most helpful to long-run recovery, we could target towns and cities with large stocks of 'recovery resources' to grow Recovery Community Centers.*

## What is a Recovery Community Center?

**Recovery Community Centers (RCCs)** represent low-cost, member-driven, voluntarist, locally managed, and community-engaged pathways to sustainable recovery for people with substance use disorder, or SUD. RCCs accomplish these goals by linking people to existing resources and infrastructure and promoting a vibrant recovery culture based in a **physical community center where people in recovery can visit, engage with others in recovery, and access resources**. RCCs are an innovative, safe, and helpful source of community recovery support that provides linkages to existing local services and resources that support recovery for people with a substance use or mental health disorder. RCCs support recovery by helping people in the community who have a history of substance use to develop recovery capital, the personal resources that enable people to live healthy, productive, and community engaged lives. RCCs do this by connecting members of the recovery community, called peers, with different types of services such as recovery coaching, medication assisted treatment, connection to employment services and child care, recovery-oriented housing, or education and workforce development training services. Located in the heart of the community, Recovery Community Centers improve the ability of the local recovery community to care for one another, and they also help destigmatize the lives of people in recovery.



The RCC model of recovery is validated by academic studies and is promoted by both the SUD community and public health officials. However, finding the right communities for RCC development in Iowa has proven difficult, underscoring the fact that Iowa is one of just a few states in the U.S. that has yet to adopt the recovery community model.

## Is Your Community Recovery Ready?

*What is the RRCI and how was it created?* We consulted scientific literature on substance use recovery and engaged key stakeholders who work directly with people in recovery around the country and in Iowa. This helped us to identify 17 unique community-based resources that we collected for almost all of Iowa's 944 cities and towns. In total, we found nearly 16,000 community features that support recovery. We mapped and analyzed these resources so we could identify a short list of 'Recovery Ready' communities across the state, culminating in the first-of-its-kind index: **The Recovery Ready Community Index (RRCI)**.

The RRCI encompasses four dimensions: breadth, depth, size, and strength. Breadth of recovery resources was measured by counting the number of different types of recovery resources in each county and community. For example, is there at least one hospital, one treatment center, and one drug drop off location in town. Depth of recovery resources was measured by first counting the total number of resources in each category and then ranking cities accordingly. This gives added importance to places that have, for example, more than one medication assisted treatment provider and many different recovery houses in town. Size of local recovery culture was measured by the total number of weekly mutual aid and peer support meetings per week in each city (e.g. total number of NA and AA meetings). Finally, the strength of the recovery community was measured as the difference between the total number of weekly peer support meetings and the number of meetings expected, based upon the total population of each town. These four dimensions were used to create the Recovery Ready Community Index. The RRCI is the simple average of each town's ranking across the four dimensions or recovery readiness. Places that ranked high on all four dimensions are labeled as especially recovery ready.

*How recovery ready is your community? Are you well-positioned to support a Recovery Community Center in your community?* Relative to all cities, Sioux City ranks high in terms of its recovery readiness. **According to the Recovery Ready Community Index (RRCI), Sioux City scored 11.8, placing it in the top 30 communities in Iowa** (Iowa's RRCI state average is 32.7). Boasting 97 mutual aid and peer support meeting locations each week, the size of the recovery culture in Sioux City is among the largest in the state. Sioux City also has an especially strong recovery culture, meaning that the 140 peer support meetings each week (held at the locations noted previously) are more than would be expected for a town of this size. Sioux City also scored high on the breadth score (17), indicating that it has a wide variety of different recovery resources to support its residents on the individual recovery journey. In short, Sioux City is well-positioned to support a thriving recovery culture, including the development of a recovery community center.

Another way to understand recovery resources in Sioux City is to compare it to other towns of roughly similar size. Sioux City far exceeded both the state average (illustrated with a solid line in

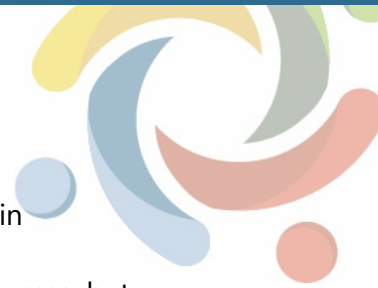
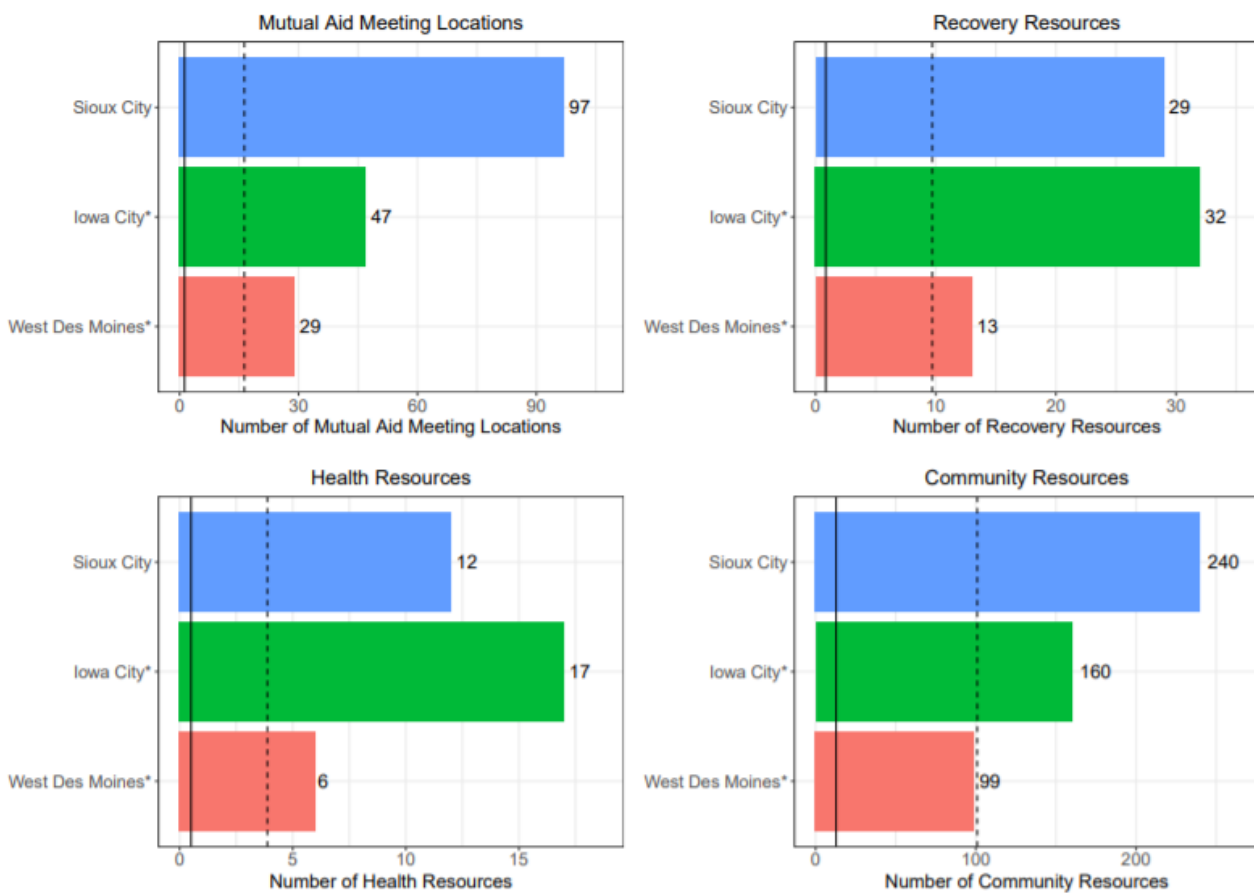
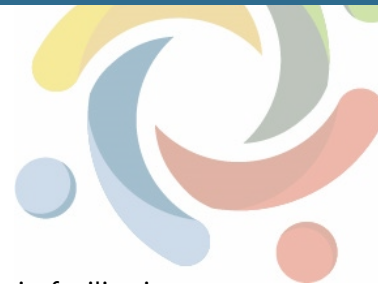


Figure 1) and the average of the 50 largest communities (illustrated with a dashed line in Figure 1). When we compared it to the similarly-sized cities of Iowa City and West Des Moines, Sioux City stands out as especially strong on the total number of recovery resources, but lagging behind Iowa City in terms of health resources. This may not be surprising, given that Sioux City was rated the among the highest on the RRCI of all Iowa cities and towns. However, compared to Iowa City, another city of similar size, Sioux City scores higher in two of the four categories of interest. In terms of total resources, Sioux City is poised to leverage extensive recovery resources to support its population of residents with a history of substance use.

**Figure 1.** *Recovery Ready Community Index: Comparison of Sioux City to Other Iowa Communities on 'Recovery Readiness'*





## What Peer Support Meetings are Available in Your Area?

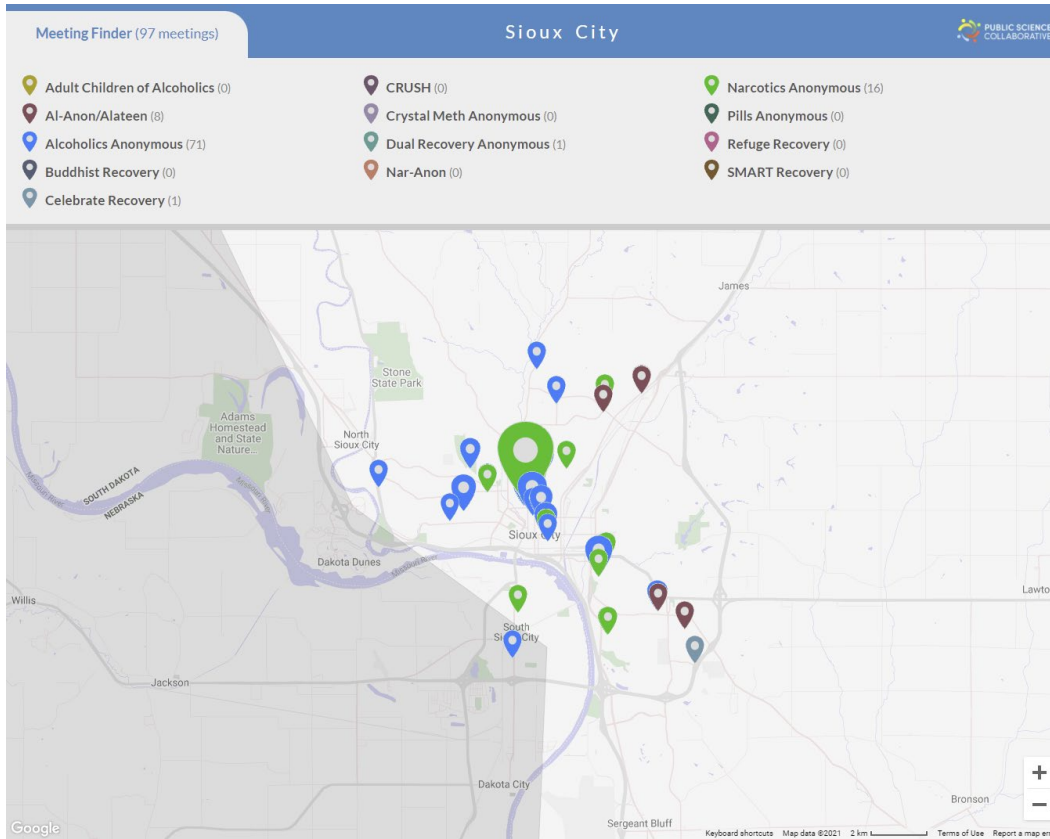
Recovery meetings, such as Alcoholics and Narcotics Anonymous, play a significant role in facilitating the recovery process. Despite the importance of these meetings there is no coherent 'one stop shop' to find the meeting you need, when you need it. People usually need to go through several steps, such as searching for meetings on Google, or looking for a specific meeting time/place on a local listings' website. It can be hard enough to connect with peer support during the best of times, but doubly so when you are in crisis and questioning your recovery. Magnifying the challenge of finding the right meeting at the right time is being new to a community, unfamiliar with the members of a local meeting, and being in a moment of duress.

We developed the PSC Meeting Finder Tool to make it easier to find local meetings. We do this by presenting a map-based list of meetings all throughout Iowa and we update the map every single day. It's a simple interface that helps people to find the appropriate meetings nearby, right now. Users can filter meetings by time of day, day of week, or whether childcare is available, for example, to find the right meeting at the right time. Having a responsive design, PSC Meeting Finder Tool runs efficiently and quickly on many different kinds of computers and mobile devices such as smartphones. Figure 2 is a screen capture of the PSC Meeting Finder Tool where you can see the location of all known peer support meetings in your community. A web version of this map is available at: [http://public-science.org/reportmaps/sioux\\_city/mf.php](http://public-science.org/reportmaps/sioux_city/mf.php). A full listing of these resources is provided as a table with meeting, type, group name, number of meetings per week, and location of meetings in Appendix 2.

As illustrated in Figure 2, Sioux City has about 100 peer support meeting locations in a given week. The majority of these meetings are sponsored by Alcoholics Anonymous and Narcotics Anonymous, but there are also several other meeting sponsors such as Al-Anon/Alateen and Celebrate Recovery. Meetings are located throughout the community, but are heavily centered on the Midtown, Westside, and Morningside areas. The map also reveals some places where there are few or no weekly meetings, which may help local peer support groups to identify new places to sponsor a meeting and support local recovery.



**Figure 2.** Sioux City Peer Support Meetings



Note: Larger markers indicate the locations that host more than one meeting per week. (Min=1, Max=9). For example, in Sioux City there are 140 total meetings hosted each week in the 97 locations identified above.

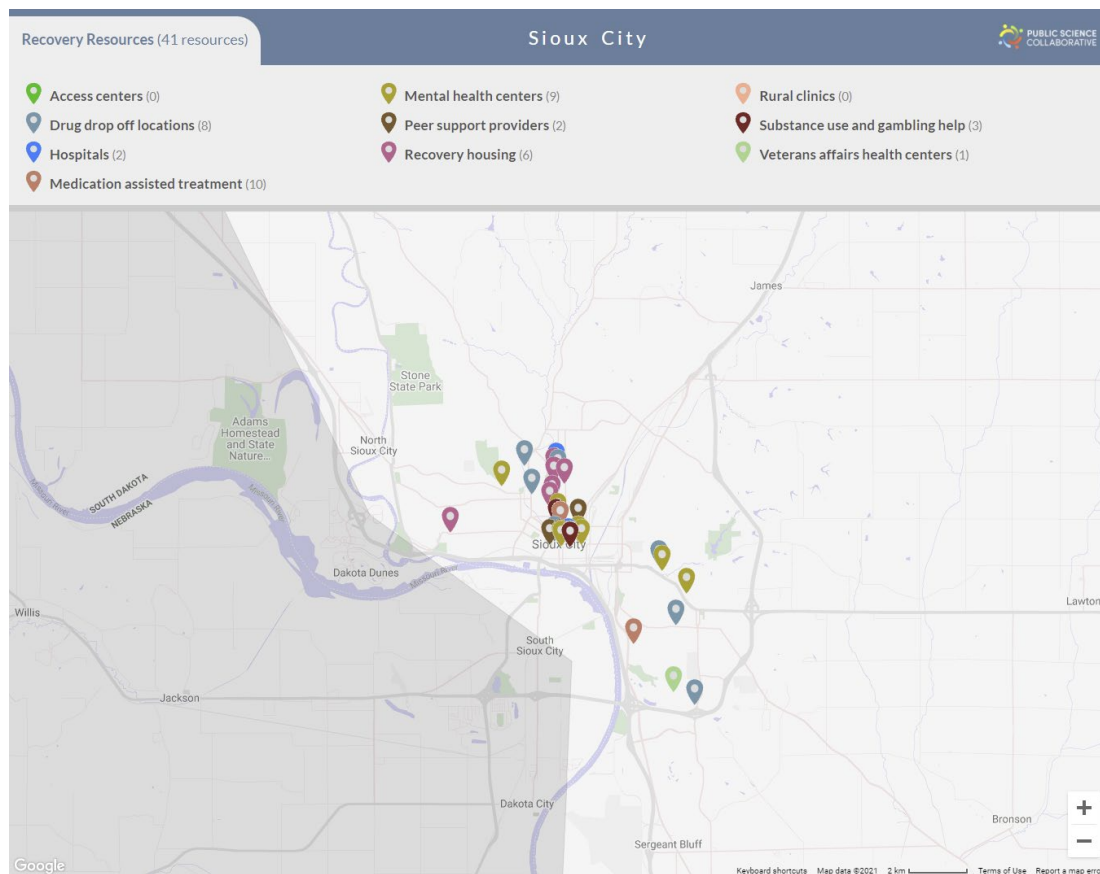
### What Recovery Resources Are Available in Your Area?

Despite their importance, community-based recovery resources can be hard to find. Whether a person is new to the community or a long-term resident, some resources remain unknown to many people in the community. The PSC Recovery Resource Locator aims to help solve this problem. Figure 3 is a screen capture of the PSC Recovery Resource Locator where you can see the location of some of the great resources your community offers to its recovery community. A web version of this map is available at: [http://public-science.org/reportmaps/sioux\\_city/rr.php](http://public-science.org/reportmaps/sioux_city/rr.php). A full listing of these resources is provided as a table with resource name, type, and location in Appendix 3.

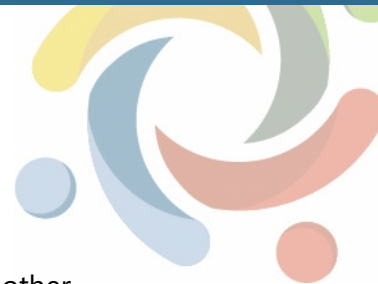




**Figure 3.** Recovery Resources in Sioux City



Sioux City has over 40 recovery resources available to support its residents in recovery from substance use disorders (see Figure 3). Recovery resources include access centers, drug drop off locations, medication assisted treatment, mental health centers, peer support providers, recovery housing, SUD and gambling support, and Veterans Affairs health clinics. The number of medication assisted treatment locations sets Sioux City apart from other communities in the state. There are nearly 10 drug drop off locations to allow individuals to dispose of their unneeded prescription drugs to limit abuse of these substances. In addition to medical professionals, many mental health providers are available to support the mental health challenges associated with SUD. To address the housing needs of people in recovery, there are at least six providers of recovery housing in the community. Rounding out the available recovery resources are the three or more SUD treatment facilities and Veterans Affairs health clinics in the community. This list of recovery resources available in Sioux City show that the community may be poised to address the needs of community members touched by SUD.



## What Community Resources are Available in Your Area?

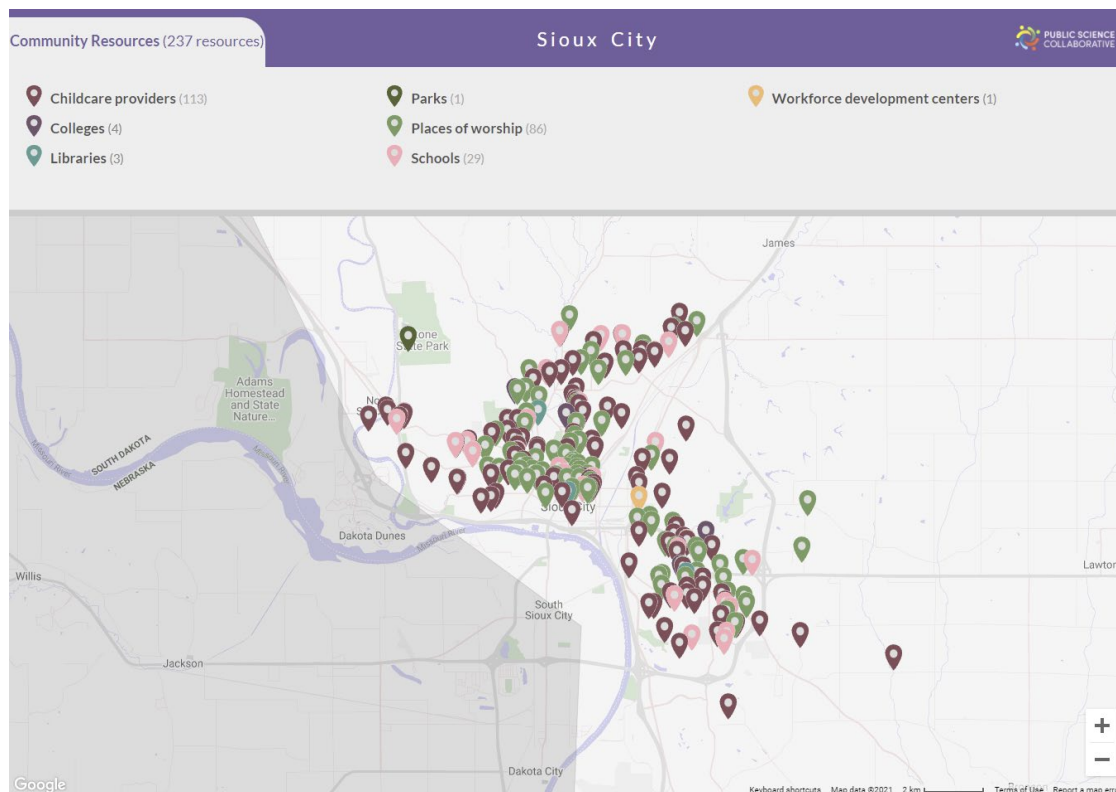
In addition to peer support meetings and clinical care, people in recovery benefit from other community resources. For example, having easy access to parks and natural areas has been shown to support substance use recovery. Participation in community groups, including religious organizations, may be a source of strength and support for many people in recovery. We have identified many additional community assets that can help people in their own recovery journey. The state of Iowa has a wide range of public and private institutions and organizations dedicated to providing health and human services, support, and activities to improve quality of life and wellbeing of all Iowans. The PSC Community Resource Locator is a utility for discovering many of these resources. Figure 4 is a screen capture of the PSC Community Resource Locator where you can see the location of some of the great resources your community offers to its recovery community. A web version of this map is available at: [http://public-science.org/reportmaps/sioux\\_city/cr.php](http://public-science.org/reportmaps/sioux_city/cr.php). A full listing of these resources is provided as a table with resource name, type, and location in Appendix 4.

Sioux City has many community resources available for its residents to live their best lives and to support those in recovery from substance use disorders (see Figure 4). In fact, the community boasts about 230 community resources, including childcare providers, universities and technical colleges, libraries, parks, places of worship, K-12 schools, and workforce development centers. Childcare resources are plentiful with about 113 providers in the community, but this may have changed since the data were collected before the Covid-19 pandemic. There are many educational resources available with multiple universities and technical colleges and nearly 30 K-12 schools both public and private. Additionally, we found there were three public libraries and several parks in the city. Where Sioux City shined was in the availability of places of worship with approximately 80 available across the area. To cap all of these resources, the workforce development office provides many services to those seeking employment in the community. With all of these resources in the community, Sioux City has a lot of potential to support those in the community who are recovering from substance use disorders.



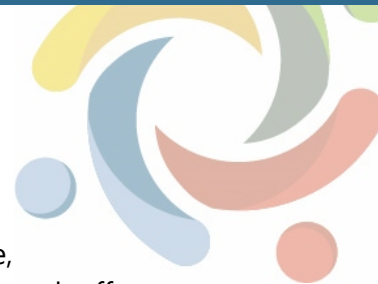


**Figure 4.** Community Resources in Sioux City



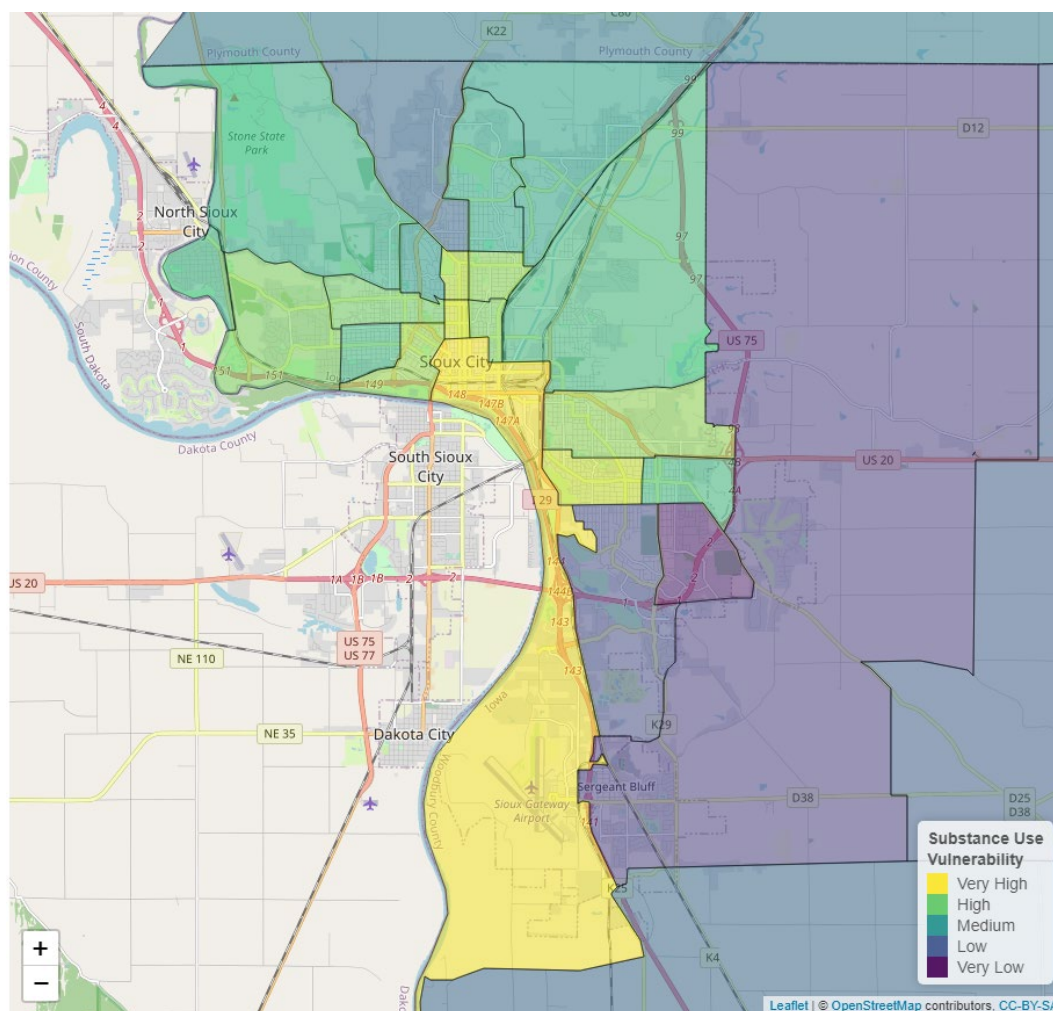
### Which Neighborhoods in Your Community Need Additional Health Resources and Support?

The Public Science Collaborative has developed data resources to help community organizations, local governments, and public health practitioners to more effectively target substance use prevention, treatment, and recovery interventions to the places in greatest need of resources. Geographic ‘hot spots’ identify places where local residents are at especially high risk for substance use disorder. We estimated statistical models using administrative data from the Treatment Episode Admissions Dataset (TEDS-A) and the National Survey of Drug Use and Health (NSDUH) to measure significant relationships between substances of misuse and socio-demographic characteristics known to affect health equity and substance use vulnerability. Neighborhood characteristics associated with each substance (e.g. methamphetamine, benzodiazepines) were overlaid with Census Bureau estimates of these same neighborhood characteristics, by census tract. Once mapped, these data help us to identify places with especially high concentrations of at-risk characteristics in need of targeted resources to reduce health inequities. You can learn more about the underlying models for this index in Appendix 1. The resulting maps are included in the pages below.

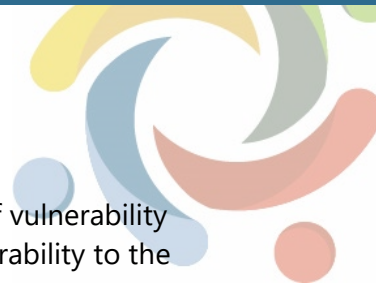


According to our models and maps, neighborhoods in Sioux City have distinctive risk profiles, with some at especially high (or low) risk of harmful use of a specific substance, such as heroin, opioids, or methamphetamine. These maps can guide public health outreach efforts and enable more targeted, substance-specific interventions based upon known neighborhood risk factors. We also developed a city map to identify overall substance use vulnerability, which can be used to support generalized substance use prevention, treatment, and recovery interventions. According to our maps, several neighborhoods in Sioux City are especially vulnerable to heroin or methamphetamine use. These same neighborhoods are also ranked high on overall substance use vulnerability, suggesting that drug-specific interventions *and* general health resources would benefit these places and their residents. Relative to other places in Iowa, opioid use vulnerability is relatively low in Sioux City.

**Figure 5.** Neighborhood Vulnerability Index, All Substance Use

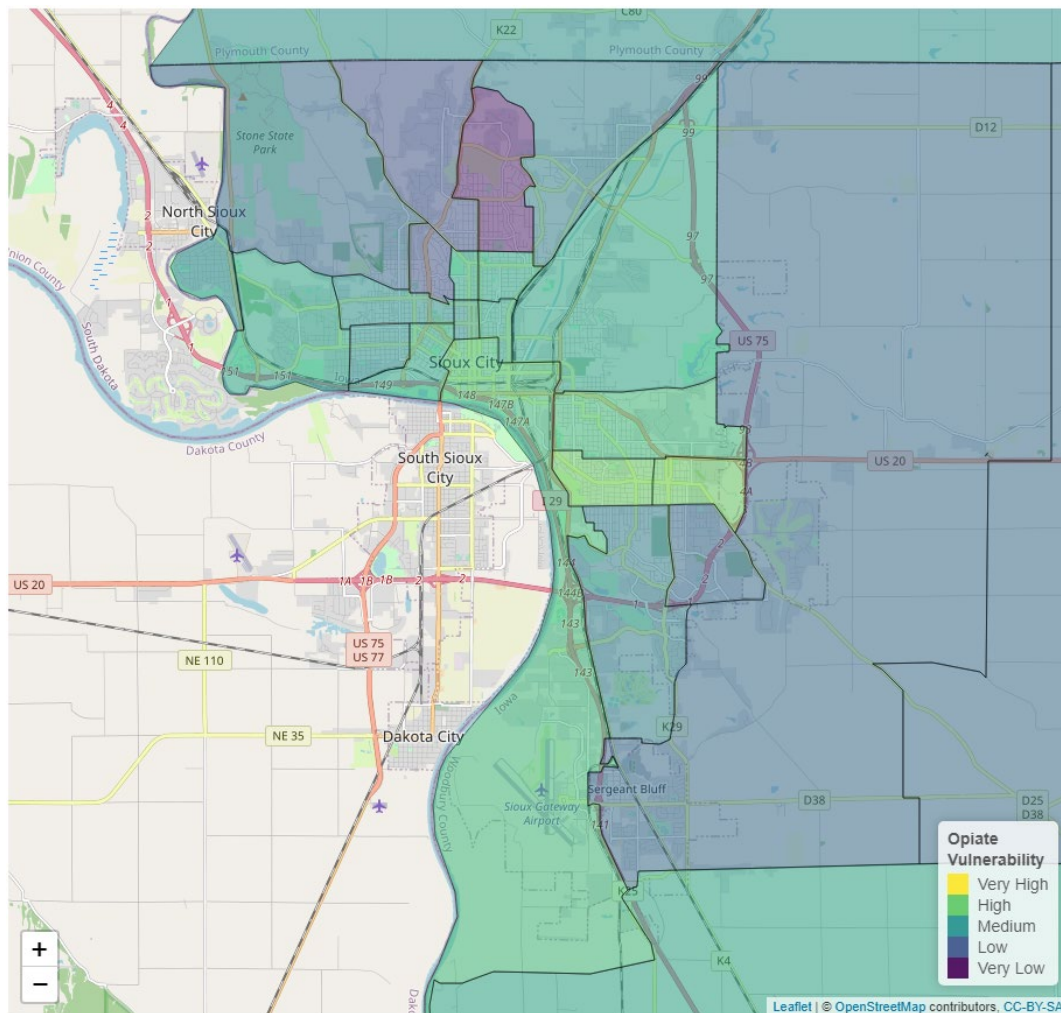


The Sioux City community is an at-risk population for overall substance use, according to the vulnerability index (see Figure 5). The areas with the highest risk of substance use are located near



the Missouri River and the Nebraska border. The areas to the north have a high level of vulnerability as well, ranging from the South Dakota border to highway 75. The substance use vulnerability to the east is very low, though this area is much less populated than the city center.

**Figure 6.** Neighborhood Vulnerability Index, Opioid Use

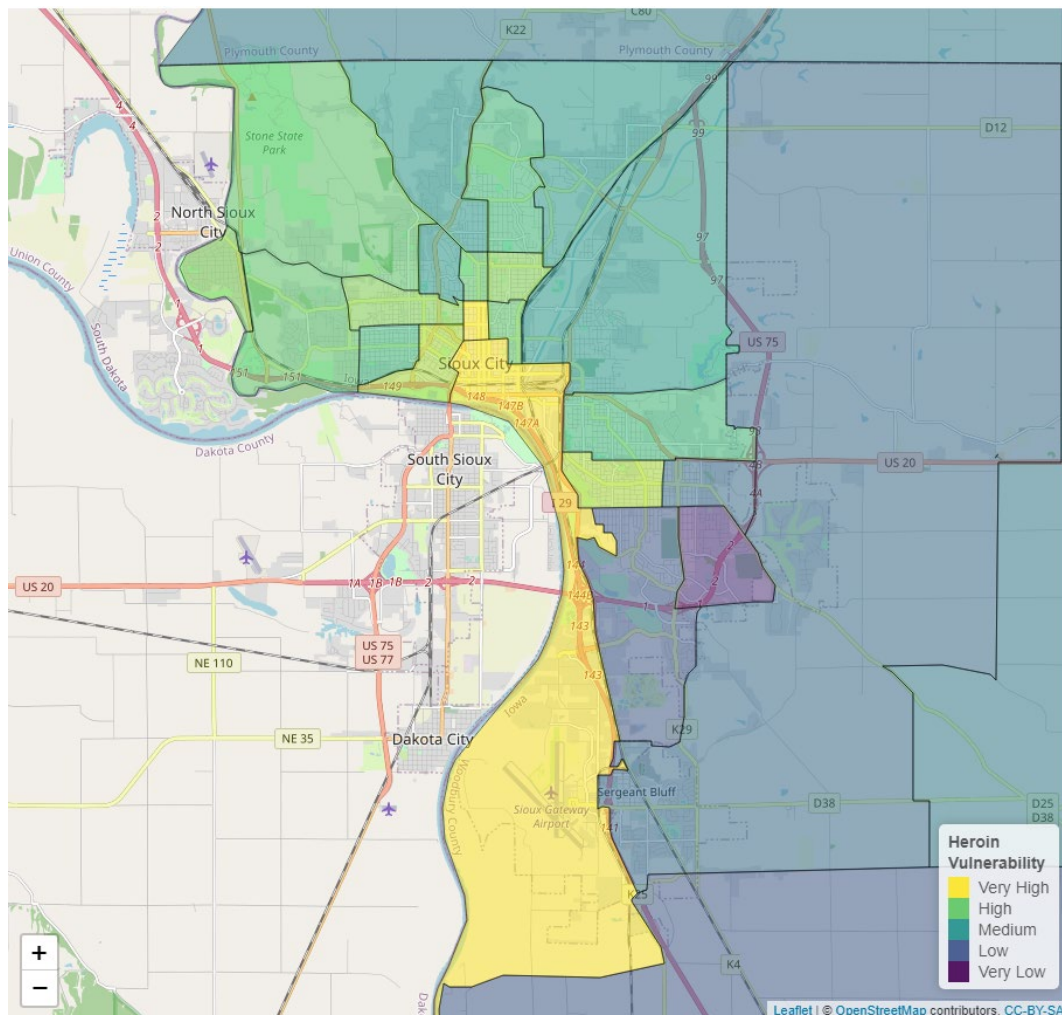


The threat of opioid use in Sioux City is low compared to other communities in Iowa, as well as other substances in Sioux City (see Figure 6). There is very little vulnerability in both the north and east areas of the city. The neighborhoods along the Missouri River tend to have low or medium levels of vulnerability. The only areas with a high level of risk are those just east of the river, where Morningside University is located.





**Figure 7.** Neighborhood Vulnerability Index, Heroin Use

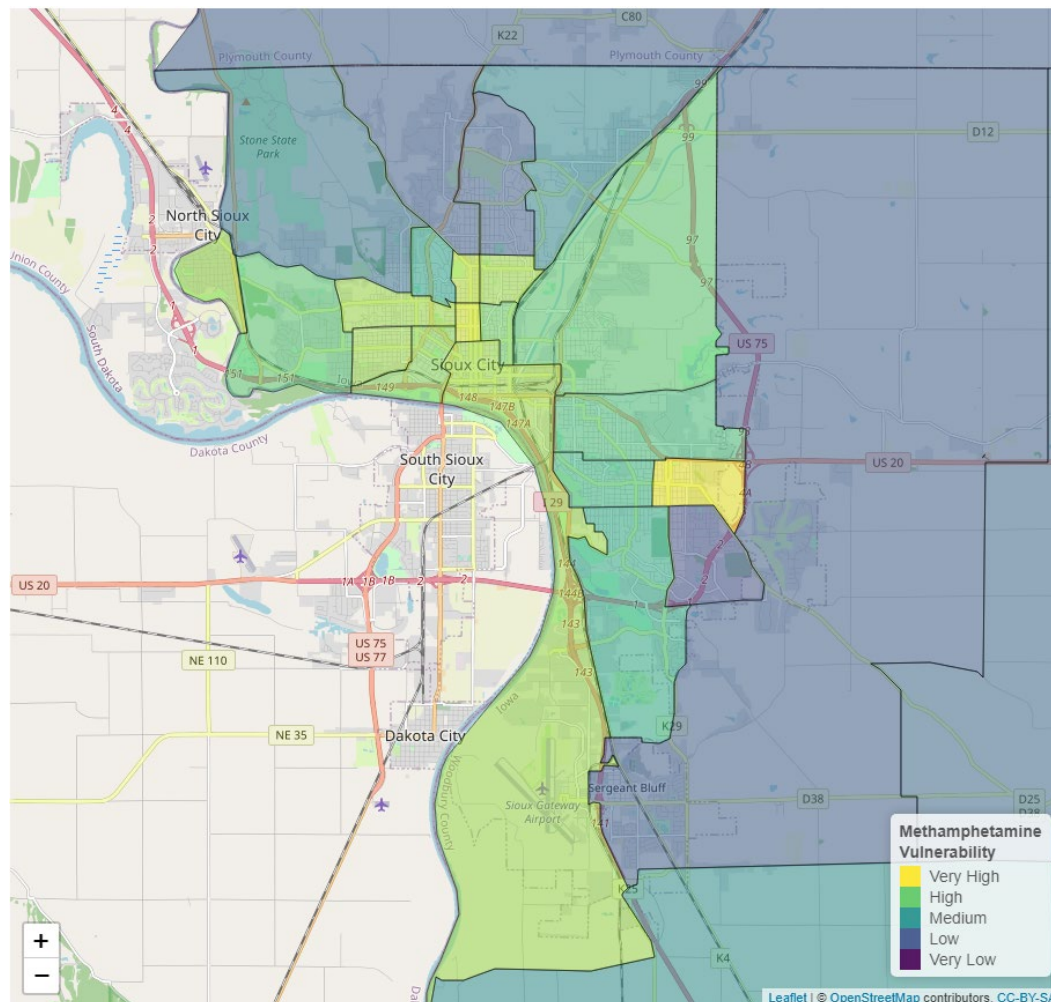


The Sioux City population is very vulnerable to heroin use, according to the vulnerability index. The area of greatest concern stretches along the Nebraska border from Grandview Park to the Sioux Gateway Airport (see Figure 7). Vulnerability remains high all the way north to Stone State Park. In the less densely populated areas to the east, the level of risk is much lower. The neighborhood containing Sioux City East High School is the only area on the map that has a very low vulnerability index. Compared to other substances, heroin harms are greatest in the Sioux City community, suggesting harm reduction interventions and greater investments in these neighborhoods will improve wellbeing throughout the community.

Methamphetamine vulnerability varies from neighborhood to neighborhood in Sioux City (see Figure 8). Most of the areas in the north and east have low levels of vulnerability, while the central and southern areas are more at risk. One interesting note is the area that contains Sioux City East High School and East Middle School has a very low level of risk, yet the area directly to the north has the highest level of risk in the city.



**Figure 8. Neighborhood Vulnerability Index, Methamphetamine Use**

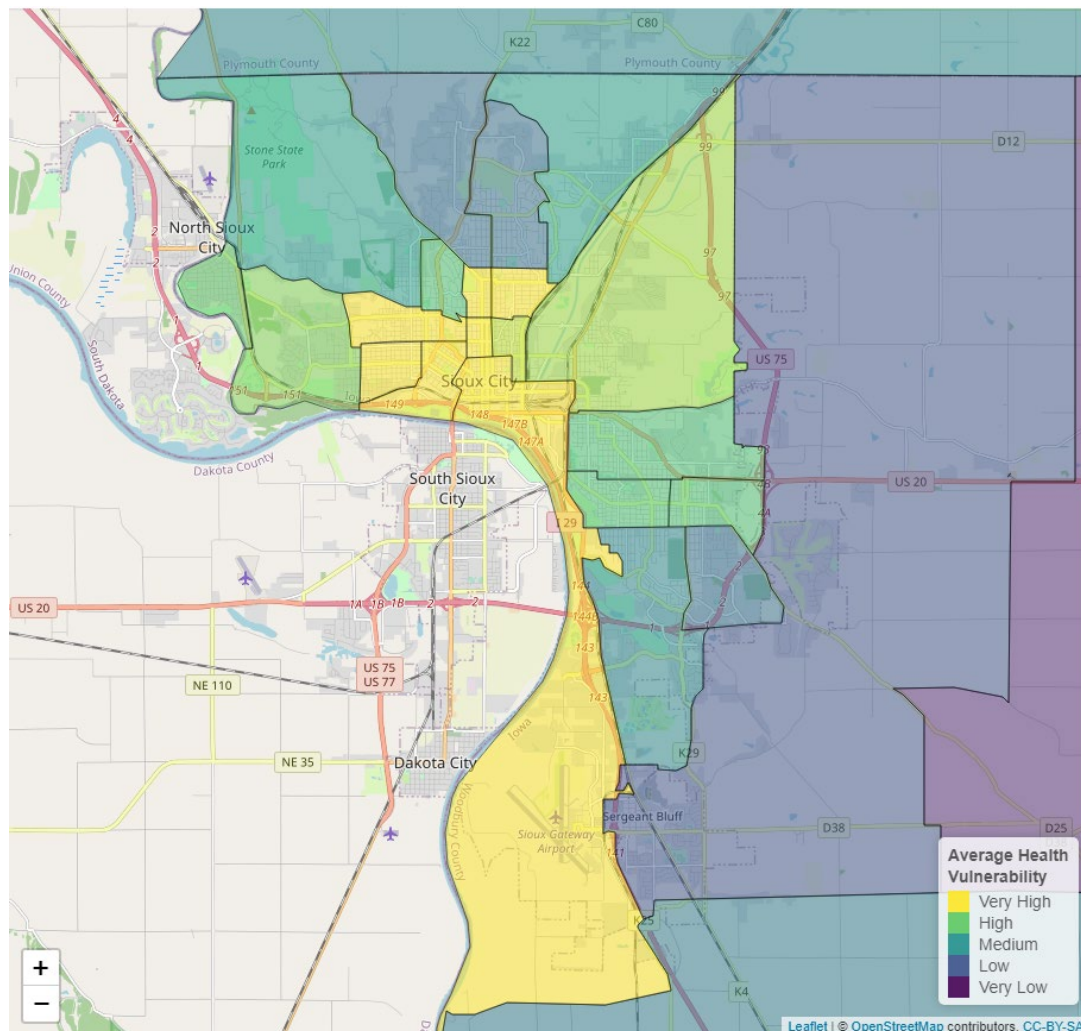


## What's Driving Health Disparities in Your Community?

In addition to the neighborhood vulnerability maps above, the Public Science Collaborative created a neighborhood map to understand health disparities in Sioux City that draws on well-established social determinants of health. By social determinants, we refer to health risks that are social in origin and tend to be unevenly distributed within a city or town. For example, in places with high average levels of education and low unemployment rates, residents tend to also have better overall health (e.g. longer life span and more healthy years of living). In places where average incomes are low and the rates of single parenting are high, people often have worse health, including higher death rates due to overdose and fewer healthy days. Knowing something about where the social determinants of health support wellbeing and where their scarcity decreases wellbeing can help community organizations and governments better target investments to reduce health disparities between neighborhoods.



**Figure 9. Neighborhood-Level Health Disparities, Social Determinants**



Sioux City and much of the immediate surrounding area have a high to very high average health vulnerability (see Figure 9). The main factors for this include the number of people 25 and older without a high school degree, which rises up to 47.6% in central Sioux City. Low English proficiency and moderately high unemployment in people 16 and older are also prevalent in the area. Additionally, 30% to 50% of Sioux City residents fall 125% below the federal poverty level in certain areas. These factors combine to put much of the Sioux City population at risk of health inequity. Most of the at-risk population is located in the central and southern areas of the city, particularly along the state border. The northern parts of Sioux City appear to be at much lower of a risk.





## APPENDIX 1: Data Used in this Report

### Recovery Ready Community Index (RRCI)

Data Tool: Recovery Ready Community Index

Data: *PSC Meeting Finder Tool data; PSC Recovery Resources Locator Tool data; PSC Community Resources Tool data, U.S. Census Bureau American Community 5-year Estimates (ACS), 2015-2019*

The Recovery Ready Community Index was designed to give a holistic view of a community's "recovery readiness" and their ability to support people in recovery. The RRCI is constructed with four sub-measures: Breadth of Recovery Resources, Depth of Recovery Resources, Size of Recovery Culture, and Strength (Vibrancy) of Recovery Culture. You can read more about how the RRCI was developed on page two of this report. The specific recovery and community data collected to build the RRCI are detailed below and listed by name and source in Appendices 2, 3, and 4.

### PSC Meeting Finder Tool

Interactive tool: <http://public-science.org/meetingfinder/>

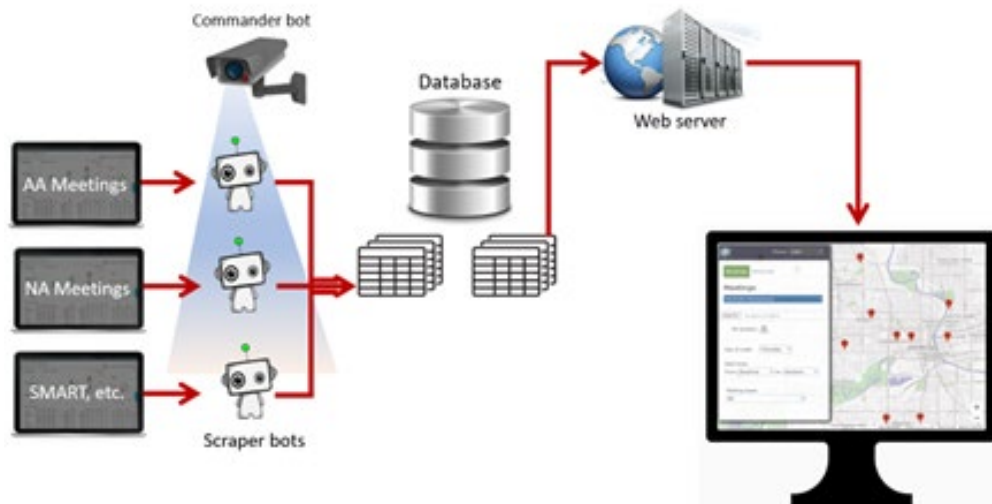
Data updated daily: *Adult Children of Alcoholics, Al-Anon/Alateen, Alcoholics Anonymous (AA), Buddhist recovery, Celebrate Recovery, CRUSH, Crystal Meth Anonymous, Dual Recovery Anonymous, Nar-Anon, Narcotics Anonymous (NA), Pill Anonymous, Refuge Recovery, and SMART Recovery*

Under the hood, the PSC Meeting Finder Tool is a data pipelining system that fetches the information of the 13 different types of recovery meetings from their original sources, and integrates them into a state map (see Figure 10). This system is composed of four major logical components: (1) automated robots that oversee and 'scrape' the peer-support websites for daily updates, (2) database infrastructure, (3) the web server infrastructure, and (4) PSC Meeting Finder web-based application.

There are two types of automated program robots, called 'bots', utilized in this system: commander bots and scraper bots. The commander bot is in charge of running and logging the scraper bots, and reports to the system administrator when a scraper bot is unsuccessful. A scraper bot is in charge of scrapping the original listing websites, and populating the database with the cleaned data. The original listings might be unstructured and contain dirty data. It is the scraper bot's duty to make sure that the data that is inserted into the database is clean and structured. These data are then pulled into the users' browser by the PSC Meeting Finder Tool.



**Figure 10.** PSC Meeting Finder Tool- Under the hood



Recovery meetings data are gathered and cleaned from 13 web-based resources via our data pipeline system. Most of these resources utilize web scraping techniques (in Python by standard requests or packages such as Selenium and BeautifulSoup packages) as well as parsing PDF (Python: PyPDF2 package) files and XLS sheets (Python: csvkit). Table 1 identifies the name of the meeting, web resource, number of locations, and number of meetings per week.

**Table 1.** Peer Support Meeting Information for Sioux City

No.	Name of meeting	Web Resource	# of locations	# meetings per week
1	Adult Children of Alcoholics	<a href="https://adultchildren.org/">https://adultchildren.org/</a>	0	0
2	Al-Anon/Alateen	<a href="https://al-anon.org/">https://al-anon.org/</a>	8	8
3	Alcoholics Anonymous	<a href="https://www.aa-iowa.org/">https://www.aa-iowa.org/</a>	71	96
4	Buddhist recovery	<a href="https://www.buddhistrecovery.org/">https://www.buddhistrecovery.org/</a>	0	0
5	Celebrate Recovery	<a href="https://locator.crgroups.info/">https://locator.crgroups.info/</a>	1	1
6	CRUSH	<a href="https://www.crushofiowa.com/">https://www.crushofiowa.com/</a>	0	0
7	Crystal Meth Anonymous	<a href="https://www.crystalmeth.org/">https://www.crystalmeth.org/</a>	0	0



8	Dual Recovery Anonymous	<a href="http://draonline.qwknetllc.com/">http://draonline.qwknetllc.com/</a>	1	1
9	Nar-Anon	<a href="https://www.nar-anon.org/">https://www.nar-anon.org/</a>	0	0
10	Narcotics Anonymous	<a href="https://www.na-iowa.org/">https://www.na-iowa.org/</a>	16	33
11	Pill Anonymous	<a href="https://www.pillsanonymous.org/">https://www.pillsanonymous.org/</a>	0	0
12	Refuge Recovery	<a href="https://refugerecovery.org/">https://refugerecovery.org/</a>	0	0
13	SMART Recovery	<a href="https://www.smartrecoverytest.org/">https://www.smartrecoverytest.org/</a>	0	0
	Total		97	139

## PSC Recovery Resource Locator Tool

Interactive tool: <http://public-science.org/recoveryresources/>

Data updated yearly: *Iowa Office of Drug Control Policy; Wikipedia of Iowa hospitals; Iowa Department of Public Health; Recovery and Resilience Coordinator with AmeriCorpAllTreatment.com; TransitionalHousing.org; WomenSoberHousing.com; Addicted.org; Recovery.org; Drug-rehabs.org; Iowa Association of Rural Health Clinics; U.S. Department of Veterans Affairs*

Recovery resources include access centers, drug drop off locations, hospitals, medication assisted treatment locations, mental health centers, peer support providers, recovery housing, rural clinics, SUD and problem gambling treatment locations, and Veterans Affairs health centers. To collect this data, we used a variety of public resources, including government agencies and recovery websites. Our collection of recovery resources is not necessarily exhaustive, but represents the data accessed through our initial effort and following the advice of substance use experts and researchers. This data was acquired through a variety of means, including simple downloads, manual data entry, computer reading of PDF files, and scraping websites. See Table 2 below for the recovery resources data sources.

## Public Science Collaborative Report

**Table 2.** Recovery Resource Locator Tool Data Sources (Downloaded Sept 2020-May 2021)

Resource	Data Source	Website Link
Access Centers	Manual Addition	
Drug Drop Off Locations	Iowa Office of Drug Control Policy	<a href="https://geodata.iowa.gov/datasets/rx-drop-off-locations-1?geometry=-101.674%2C40.504%2C-84.986%2C43.364">https://geodata.iowa.gov/datasets/rx-drop-off-locations-1?geometry=-101.674%2C40.504%2C-84.986%2C43.364</a>
Hospitals	Wikipedia list of Iowa hospitals	<a href="https://en.wikipedia.org/wiki/List_of_hospitals_in_Iowa">https://en.wikipedia.org/wiki/List_of_hospitals_in_Iowa</a>
Medication Assisted Treatment Locations	Iowa Department of Public Health	<a href="https://idph.iowa.gov/mat">https://idph.iowa.gov/mat</a>
Mental Health Centers	Iowa Department of Public Health	<a href="https://dhs.iowa.gov/sites/default/files/MHDDAccreditedProviders_32.pdf?082320201508">https://dhs.iowa.gov/sites/default/files/MHDDAccreditedProviders_32.pdf?082320201508</a>
Peer Support Providers	Todd Lange, Recovery and Resilience Coordinator with AmeriCorp	email
Recovery Housing	AllTreatment.com; TransitionalHousing.org; WomenSoberHousing.com; Addicted.org; Recovery.org; Drug-rehabs.org	AllTreatment.com; TransitionalHousing.org; WomenSoberHousing.com; Addicted.org; Recovery.org; Drug-rehabs.org
Rural Clinics	Iowa Association of Rural Health Clinics	<a href="https://iarhc.org/find-a-rural-health-clinic?view=map">https://iarhc.org/find-a-rural-health-clinic?view=map</a>
SUD and Problem Gambling Treatment Locations	Iowa Department of Public Health	<a href="https://idph.iowa.gov/Portals/1/userfiles/166/Licensure/All%20Licensed%20Substance%20Use%20Disorder%20-%20Problem%20Gambling%20Program%27s%20List.pdf">https://idph.iowa.gov/Portals/1/userfiles/166/Licensure/All%20Licensed%20Substance%20Use%20Disorder%20-%20Problem%20Gambling%20Program%27s%20List.pdf</a>
Veterans Affairs Health Centers	U.S. Department of Veterans Affairs	<a href="https://www.va.gov/directory/guide/state.asp?STATE=IA&amp;dnum=ALL">https://www.va.gov/directory/guide/state.asp?STATE=IA&amp;dnum=ALL</a>



## PSC Community Resource Locator Tool

Interactive tool: <http://public-science.org/communityresources/>

Data updated yearly: *Iowa Department of Human Services; Wikipedia of Iowa colleges; Institute of Museum and Library Services, Public Libraries Survey; MyCountyParks.com; USGS Geographic Names Information System; Iowa Dept of Education; Iowa Workforce Development*

Community resources include childcare providers, colleges, libraries, parks, places of worship, K-12 schools, and workforce development centers. To collect this data, we used a variety of public resources, including government agencies and recovery websites. Our collection of community resources is not necessarily exhaustive, but represents the data accessed following the advice of substance use experts and researchers. This data was acquired through a variety of means, including simple downloads, manual data entry, computer reading of PDF files, and scraping websites. See Table 3 below for the community resources data sources.

**Table 3.** *Community Resource Locator Tool Data Sources (Downloaded Sept 2020-April 2021)*

Resource	Data Source	Website Link
Childcare Providers	Iowa Department of Human Services	<a href="http://ccmis.dhs.state.ia.us/ClientPortal/ProviderLocator.aspx">http://ccmis.dhs.state.ia.us/ClientPortal/ProviderLocator.aspx</a>
Colleges	Wikipedia list of Iowa colleges	<a href="https://en.wikipedia.org/wiki/List_of_colleges_and_universities_in_Iowa">https://en.wikipedia.org/wiki/List_of_colleges_and_universities_in_Iowa</a>
Public Libraries	Institute of Museum and Library Services	<a href="https://www.ims.gov/research-evaluation/data-collection/public-libraries-survey">https://www.ims.gov/research-evaluation/data-collection/public-libraries-survey</a>
Parks	MyCountyParks.com	<a href="https://www.mycountyparks.com/County/Default.aspx">https://www.mycountyparks.com/County/Default.aspx</a>
Places of Worship	USGS Geographic Names Information System	<a href="https://data.iowa.gov/Physical-Geography/Iowa-Church-Buildings/juvk-dad9">https://data.iowa.gov/Physical-Geography/Iowa-Church-Buildings/juvk-dad9</a>
K-12 Schools	Iowa Department of Education	Public Schools: <a href="https://educateiowa.gov/documents/directories/2020/09/2020-21-iowa-public-school-building-directory">https://educateiowa.gov/documents/directories/2020/09/2020-21-iowa-public-school-building-directory</a> Private Schools: <a href="https://educateiowa.gov/documents/directories/2020/09/2020-21-iowa-non-public-school-building-directory">https://educateiowa.gov/documents/directories/2020/09/2020-21-iowa-non-public-school-building-directory</a>
Workforce Development Centers	Iowa Workforce Development	<a href="https://www.iowaworkforcedevelopment.gov/contact">https://www.iowaworkforcedevelopment.gov/contact</a>



## Substance Use Vulnerability Index

Data Tool: Substance Use Vulnerability Index

Data: *Treatment Episode Data Set- Admission and Discharge (TEDS), 2000-2018*  
*National Survey on Drug Use and Health data (NSDUH), 2015-2019*  
*U.S. Census Bureau American Community 5-year Estimates (ACS), 2015-2019*

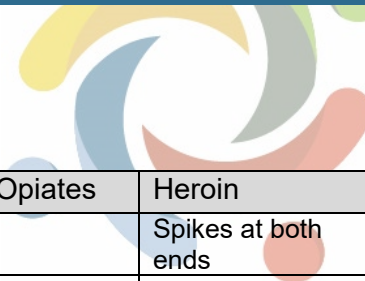
Geographic 'hot spots' of people at risk for substance use disorder were first predicted based on models of administrative data from Treatment Episode Data on admissions (TEDS) and the National Survey of Drug Use and Health (NSDUH) data that assessed significant relationships between key substances and socio-demographic characteristics known to affect health equity and substance use vulnerability (Tables 5-6 results below). Then, the significant predictions of risk for each substance were overlaid with Census Bureau's American Community Survey 5-year estimates of these population characteristics to provide a visual representation of places with especially high concentrations of people with at-risk characteristics. The Census characteristics described in Table 4 below are reported in Figures 5-8.

**Table 4.** *Substance Use Risk Index using U.S. Census Bureau American Community 5-year Estimates (2015-19)*

	Census Table	Description
Age	B06001	Data table includes population by age categories.
Sex	B01001	Data table includes population by sex.
Race	B03002	Data table includes primary race, by ethnicity.
Education	B15002	Data table includes educational attainment level for population 25+, by sex.
Poverty Status	S1701_C01	Data table includes poverty status by age bracket and for different income levels.
Employment	B23006	Data table includes employment status, by educational attainment level.
Marital Status	B12001	Data table includes marital status by sex.
Parental Status	B09002	Data table includes parental and childcare status.
Pop Density	B06001	Data table includes population (see above, also Sex).

Note: Data was collected using the Census API a and R tidycensus package.





**Table 5. Substance Use Risk Index using TEDS Admission Data**

	Alcohol	Cannabis	Meth	Cocaine	Other Opiates	Heroin	Benzos
Age	Older, >35	Young, <35, <25	Middle age	>45	<25	Spikes at both ends	<25
Sex	Male	Male	Female			Male	Female
Race	Black, Hispanic	Black	White	Non-white	Asian, white	Non-white	White
Education		No college	No college	Some college	Some college	Some college	Some college
Poverty	Public Assistance	Public Assistance		Retired/Disabled	Wages/Salary, Retired/Disabled	Wages/Salary, Retired/Disabled	
Employment	Employed	Part time	Unemployed	Employed	Unemployed		Part time
Marital Status			Separated, Divorced, Widowed	Single	Married	Single	
Pop Density	Rural, Micro	Rural, Micro	Micro	Metro	Metro	Metro	Metro, Micro

Note: Empty cell indicates that no categories showed significantly increased risk.

**Table 6. Substance Use Risk Index using NSDUH Data**

	Alcohol	Cannabis	Meth	Cocaine	Other Opiates	Heroin	Benzos
Age	26-34	Young, <35, <25	Middle age	18-34	<50	26-49	18-34
Sex	Male	Male	Male	Male	Male	Male	Male
Race	White	White, Native American	White, Native American	White, Native American	White, Native American	White	White
Education	College	Some college, maybe	No college		No college	No college	
Income	>75,000	<20,000	<40,000	<20,000	<40,000	<20,000	
Employment	Employed	Unemployed	Unemployed	Unemployed	Unemployed	Unemployed	Unemployed
Marital Status	Single, separated	Single	Separated, Divorced	Single	Single	Single	Single
Pop Density	Metro	Metro	Non-metro	Metro	Metro	Metro	Metro

Note: Empty cell indicates that no categories showed significantly increased risk.



## Social Determinants of Health Index

Data tool: Social Determinants of Health Index

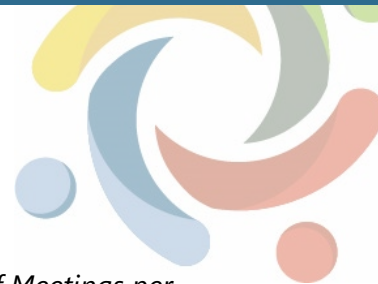
Data: U.S. Census Bureau American Community 5-year Estimates (ACS), 2015-2019

The Social Determinants of Health Index was developed to promote health equity through providing a better understanding of the environments that create and ameliorate the multifactorial risk factors of substance misuse on priority populations. All data for the Substance Use Vulnerability Index comes from the U.S. Census Bureau American Community Survey 5-year estimates (2015-2019). The 5-year pooled dataset represents 60 months of data that enable more precise multi-year estimates. Because many of Iowa's counties have relatively small populations, the 5-year set of pooled data is the only type of ACS estimates that are available to use across all 99 counties. Following the standards set by *Washington State's Social Determinants of Health Website* ([www.doh.wa.gov/DataandStatisticalReports/HealthDataVisualization/SocialDeterminantsofHealthDashboards/CensusTractSocialDeterminantsofHealth](http://www.doh.wa.gov/DataandStatisticalReports/HealthDataVisualization/SocialDeterminantsofHealthDashboards/CensusTractSocialDeterminantsofHealth)), PSC collected information on the educational attainment level, health insurance coverage, English proficiency, unemployment, and poverty status in each county and then used this information to calculate the average health index for each of Iowa's 99 counties (see Table 7).

**Table 7.** Substance Use Risk Index using U.S. Census Bureau American Community 5-year Estimates (2015-2019)

	Census Table	Description
Educational Attainment	S1501	Data table includes educational attainment level for population 25+, by sex.
Health Insurance Coverage	S2701_C05_001	Variable is percent of civilian noninstitutionalized population that is uninsured.
English Proficiency	S1601_C06_001	Variable is percent of population 5+ that speaks English less than very well.
Unemployment, 16+	S2301_C04_001	Variable is percent of population 16+ that is in the labor force, but is unemployed.
Poverty Status	S1701_C01	Data table includes poverty status by age bracket and for different income levels.

Note: Data was collected using the Census API and R tidycensus package.



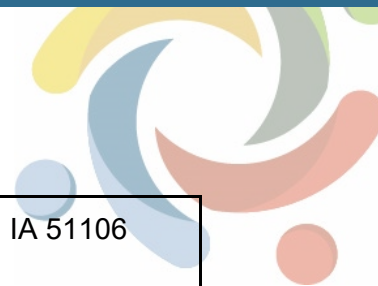
## APPENDIX 2: Peer Support Contacts in Your Area

**Table 8.** *Sioux City Peer Support Meeting Type, Name of Peer Support Group, Number of Meetings per Week, and Location of Meetings*

Meeting Type	Name	Meet per week	Meeting Location
AA	21 Club Non-Smoking Group	1	First United Methodist Church, 1915 Nebraska St, Sioux City, IA 51104
AA	6:00 PM Speaker Tape Group	1	1403 Summit St, Sioux City, IA 51103
AA	Afternoon Matinee Group	2	420 Jones St, Sioux City, IA 51101
AA	Big Book Buddies Study Group	1	420 Jones St, Sioux City, IA 51101
AA	Books And Cookies Group	1	4327 Morningside Ave, Sioux City, IA 51106
AA	Books Not Booze	1	1403 Summit St, Sioux City, IA 51103
AA	By The Book Group	1	2432 Jay Ave, Sioux City, IA 51106
AA	Check Your Ego At The Door Group	1	4034 Floyd Blvd, Sioux City, IA 51108
AA	Cheyenne Non Smoking Group	1	3939 Cheyenne Blvd, Sioux City, IA 51104
AA	Cheyenne Non-Smoking Group	1	3939 Cheyenne Blvd, Sioux City, IA 51104
AA	Drunks Helping Drunks Group	1	1817 Riverside Blvd, Sioux City, IA 51109
AA	Faith Without Works 12x12 Group	1	1403 Summit St, Sioux City, IA 51103
AA	Foxhall Chapter 2 Speaker Meeting	1	218 18th St, Sioux City, IA 51105
AA	Fri. 5:30 PM Non-Smokers Group	1	420 Jones St, Sioux City, IA 51101
AA	Glenn Avenue Group	1	5200 Glenn Ave, Sioux City, IA 51106



AA	Grupo Buena Voluntad	1	407 11th St, Sioux City, IA 51105
AA	Grupo Buena Voluntad	6	407 11th St, Sioux City, IA 51105
AA	Grupo En Nuevo Camino	1	Jackson St & 12th St, Sioux City, IA 51105
AA	Grupo Un Dia A La Vez	2	618 10th St, Sioux City, IA 51105
AA	Grupo Un Dia A La Vez Group	2	618 10th St, Sioux City, IA 51105
AA	Grupo Un Nuevo Camino	1	1122 Jackson St, Sioux City, IA 51105
AA	Grupo Un Nuevo Camino	2	1512 Pierce St, Sioux City, IA 51105
AA	Grupo Unidos En Sobriedad	3	618 10th St, Sioux City, IA 51105
AA	Grupo Voluntad	1	407 11th St, Sioux City, IA 51105
AA	Hawkeye 10 A.M. Group	3	420 Jones St, Sioux City, IA 51101
AA	Hawkeye 3 & 11 Group	1	801 5th St, Sioux City, IA 51101
AA	How & Why of It 12 X 12 Study Group	1	320 Jones St, Sioux City, IA 51101
AA	Leeds Birthday Night (last Saturday of the Month)	1	4034 Floyd Blvd, Sioux City, IA 51108
AA	Leeds Sun Night Spiritual Grp	1	4034 Floyd Blvd, Sioux City, IA 51108
AA	Leeds Tuesday Open Group	1	4034 Floyd Blvd, Sioux City, IA 51108
AA	Leeds Wednesday Brown Bag Grp	1	4034 Floyd Blvd, Sioux City, IA 51108
AA	Living in the Solution	1	4600 Hamilton Blvd, Sioux City, IA 51104
AA	Living Sober Group	1	1403 Summit St, Sioux City, IA 51103
AA	Many Hands Caring Group	1	801 5th St, Sioux City, IA 51101



AA	Morningside Fellowship Group	2	4327 Morningside Ave, Sioux City, IA 51106
AA	New Freedom Group	2	1403 Summit St, Sioux City, IA 51103
AA	No Matter What Group	1	2420 Jones St, Sioux City, IA 51104
AA	No Name Group	1	1407 W 18th St, Sioux City, IA 51103
AA	No-Name Group	1	1407 W 18th St, Sioux City, IA 51103
AA	One A Day Group	5	2432 Jay Ave, Sioux City, IA 51106
AA	Pause When Agitated 11th Step Meeting	1	1403 Summit St, Sioux City, IA 51103
AA	Room 106 Big Book Group	2	1701 W 25th St, Sioux City, IA 51103
AA	Saturday Long Timer Speaker Meeting	1	1403 Summit St, Sioux City, IA 51103
AA	Saturday Morning 12&12 Group	1	4034 Floyd Blvd, Sioux City, IA 51108
AA	Second Chance Group	1	420 Jones St, Sioux City, IA 51101
AA	Serenity Now Group	1	420 Jones St, Sioux City, IA 51101
AA	Someone Cares Group	1	4034 Floyd Blvd, Sioux City, IA 51108
AA	South Sioux City Big Book Study	1	218 18th St, Sioux City, IA 51105
AA	South Sioux City Big Book Study Group	1	218 18th St, Sioux City, IA 51105
AA	South Sioux City Group	1	3601 Dakota Ave, South Sioux City, NE 68776
AA	Spiritual Group	1	1403 Summit St, Sioux City, IA 51103
AA	Spiritual Steps Sunday 3 & 11 Group Meeting Group	1	420 Jones St, Sioux City, IA 51101
AA	Steel Magnolias Group	1	4327 Morningside Ave, Sioux City, IA 51106



AA	Stockyards Exchange Group	1	1122 Jackson St, Sioux City, IA 51105
AA	Sunday Morning Spiritual Group	1	2432 Jay Ave, Sioux City, IA 51106
AA	Sunday Night Big Book Study Group	1	1403 Summit St, Sioux City, IA 51103
AA	Sunrise Attitude Adjustment Gp	4	2111 W 6th St, Sioux City, IA 51103
AA	Sunrise Attitude Adjustment Gp	3	420 Jones St, Sioux City, IA 51101
AA	Sunrise Attitude Club	1	420 Jones St, Sioux City, IA 51101
AA	There Is A Solution Group	1	420 Jones St, Sioux City, IA 51101
AA	Tuesday 12X12 Group	1	1403 Summit St, Sioux City, IA 51103
AA	Tuesday Night Early Bird Group	1	1407 W 18th St, Sioux City, IA 51103
AA	Vast Amount Of Fun Group	1	2432 Jay Ave, Sioux City, IA 51106
AA	Wed Big Book Study Group	1	420 Jones St, Sioux City, IA 51101
AA	Westlawn Group	1	2521 W 4th St, Sioux City, IA 51103
AA	Where It All Begins Group	1	2432 Jay Ave, Sioux City, IA 51106
AA	Wise Words Group	1	1403 Summit St, Sioux City, IA 51103
AA	Wise Words Meeting	1	1403 Summit St, Sioux City, IA 51103
AA	Women's Big Book Step Study Group	1	4034 Floyd Blvd, Sioux City, IA 51108
AA	Young Persons in AA (YPAA) Group	1	1407 W 18th St, Sioux City, IA 51103
AA	Young Persons In AA (YPAA) Group	1	420 Jones St, Sioux City, IA 51101
AIAnon	Acceptance AFG	1	4327 Morningside Ave, Sioux City, IA 51106
AIAnon	AFG Newcomers Women's Group	1	3700 Indian Hills Dr, Sioux City, IA 51104





AlAnon	Cal's Comfort Zone AFG	1	4034 Floyd Blvd, Sioux City, IA 51108
AlAnon	Glenn Avenue AFG	1	5200 Glenn Ave, Sioux City, IA 51106
AlAnon	Tues AM AFG	1	420 Jones St, Sioux City, IA 51101
AlAnon	Wednesday Midweek Relief AFG	1	4034 Floyd Blvd, Sioux City, IA 51108
AlAnon	Women's AFG Book Study	1	4034 Floyd Blvd, Sioux City, IA 51108
AlAnon	Young Person's Alateen	1	3700 Indian Hills Dr, Sioux City, IA 51104
CR	Sunnybrook Community Church	1	5601 Sunnybrook Dr, Sioux City, Iowa 51106 United States
DRA	Siouxland DRA	1	Jones St & 5th St Sioux City, IA 51101
NA	Anything Goes	1	First United Methodist Church, 1915 Nebraska St, Sioux City, IA 51104
NA	Basic Text Study	1	2700 Leech Ave, Sioux City, IA 51106
NA	Boys to Men	1	1404 Summit St, Sioux City, IA 51103
NA	Candlelight	1	1424 27th St, Sioux City, IA 51104
NA	Clean Purpose Group	1	2003 A St, South Sioux City, NE 68776
NA	Freedom and Surrender	1	1407 W 18th St, Sioux City, IA 51103
NA	Glad You're Here	1	1404 Summit St, Sioux City, IA 51103
NA	Guardian Angels	1	4001 Indian Hills Dr, Sioux City, IA 51108
NA	Guardian Angels II	1	2500 Glenn Ave Suite 50, Sioux City, IA 51106
NA	Keeping it Simple	1	2500 Glenn Ave Suite 50, Sioux City, IA 51106
NA	Living Clean	1	2700 Leech Ave, Sioux City, IA 51106
NA	Living Free	18	1404 Summit St, Sioux City, IA 51103



NA	LIVING THE SOLUTION	1	2432 Jay Ave, Sioux City, IA 51106
NA	NOONER	1	420 Jones St, Sioux City, IA 51101
NA	Not Quite Right	1	420 Jones St, Sioux City, IA 51101
NA	Saturday Night Unity Group	1	1424 27th St, Sioux City, IA 51104

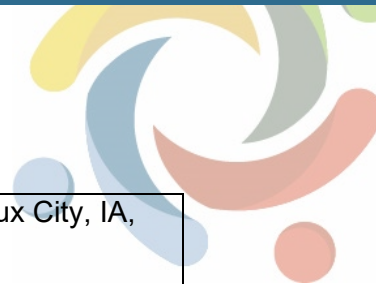
Note: Meeting type abbreviations are as follows: AA = Alcoholics Anonymous; AIAnon = AI-Anon/Alateen; CR= Celebrate Recovery; CRUSH= CRUSH Recovery; NA= Narcotics Anonymous; and NarAnon= Nar-Anon.



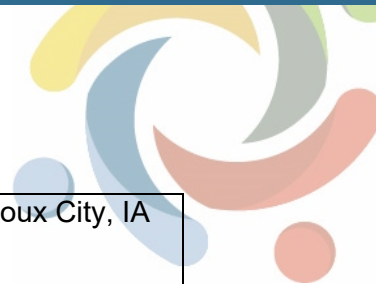
### APPENDIX 3: Recovery Resources in Your Area

**Table 9.** *Sioux City Recovery Resource Type, Name of Business, and Address of Business*

Resource	Name	Address
Drug Drop Off Location	Drilling Morningside Pharmacy	4010 Morningside Pharmacy, Sioux City, Iowa 51106
Drug Drop Off Location	Hy-Vee Mainstreet (7070)	2611 Pierce Street, Sioux City, Iowa 51104
Drug Drop Off Location	Hy-Vee Pharmacy	3301 Gordon Dr, Sioux City, Iowa 51105
Drug Drop Off Location	Hy-Vee Pharmacy #1 (1610)	2827 Hamilton Blvd., Sioux City, Iowa 51104
Drug Drop Off Location	Hy-Vee Pharmacy #2 (1614)	4500 Sergeant Road, Sioux City, Iowa 51106
Drug Drop Off Location	Sioux City Police Department	601 Douglas Street, Sioux City, Iowa 51101
Drug Drop Off Location	Siouxland Comm Health Ctr Pharmacy	1021 Nebraska Street, Sioux City, Iowa 51105
Drug Drop Off Location	Walgreens	1900 Hamilton Blvd, Sioux City, Iowa 51104
Hospital	MercyOne Siouxland Medical Center	801 5th St, Sioux City, IA 51101
Hospital	UnityPoint Health-Saint Luke's, Sioux City	2720 Stone Park Blvd, Sioux City, IA 51104
Medication Assisted Treatment	Center for Behavioral Health Iowa, Inc.	2520 Glenn Avenue, Sioux City, IA, 51106
Medication Assisted Treatment	Dr. Nesrin Abu Ata M.D. - Siouxland Mental Health	625 Court Street, Sioux City, IA, 51102
Medication Assisted Treatment	Andrea Harris NP	800 5th Street, Sioux City, IA, 51101
Medication Assisted Treatment	Dr. David Paulsrud M.D. - Jackson Recovery Centers	800 5th Street, Sioux City, IA, 51101



Medication Assisted Treatment	Shawn Salmen NP - Jackson Recovery Centers	800 - 5th Street, Sioux City, IA, 51102
Medication Assisted Treatment	Rachel Wurth NP - Jackson Recovery Centers	800 5th Street, Sioux City, IA, 51101
Medication Assisted Treatment	Dr. Steven Gordon M.D. - Siouxland Community Health Center	1021 Nebraska Street, Sioux City, IA, 51101
Medication Assisted Treatment	Jamie Wright NP - Siouxland Community Health Center	1021 Nebraska Street, Sioux City, IA, 51105
Medication Assisted Treatment	Dr. Michael Piplani MD	1021 Nebraska Street, Sioux, IA, 51105
Medication Assisted Treatment	Dr. Thor Swanson M.D. - Siouxland Community Health Center	1021 Nebraska Street, Sioux City, IA, 51104
Mental Health Center	Building Bridges Counseling & Associates Inc.	505 5th Street, Sioux City, IA
Mental Health Center	Catholic Charities Sioux City Diocese	1601 Military Road, Sioux City, IA
Mental Health Center	Counseling and Support Services	421 Nebraska, Sioux City, IA
Mental Health Center	Family Wellness Associates	1115 5th Street, Sioux City, IA
Mental Health Center	Jackson Recovery Centers, Inc.	800 5th Street, Sioux City, IA
Mental Health Center	Mid-Step Services, Inc.	4303 Stone Avenue, Sioux City, IA
Mental Health Center	Simple Life, Inc.	400 S. Martha St., Sioux City, IA
Mental Health Center	Siouxland Mental Health Center	625 Court Street, Sioux City, IA
Mental Health Center	Transitional Services of Iowa, Inc.	1221 Pierce Street, Sioux City, IA
Peer Support Provider	Siouxland Mental Health	1101 Court Street, Sioux City, IA
Peer Support Provider	Siouxland Mental Health	205 5th Street, Sioux City, IA
Recovery Housing	Jackson Recovery Center/ Marianne Manor	2309 Jackson St, Sioux City, IA



Recovery Housing	Jackson Recovery Center/ Women and Children's	3200 West 4th St, Sioux City, IA
Recovery Housing	Jackson Recovery Center/Chad House	2325 Douglas St, Sioux City, IA
Recovery Housing	Jackson Recovery Center/Grandview House	1800 Grandview St, Sioux City, IA
Recovery Housing	Oxford House 16th Street	209 16th St, Sioux City, IA
Recovery Housing	Oxford House Douglas Street	2615 Douglas St, Sioux City, IA
SUD and Problem Gambling Treatment Location	Jackson Recovery Centers	800 5th Street, Ste. 200 Sioux City, 51101
SUD and Problem Gambling Treatment Location	Kulawik Counseling Services	505 5th Street, Suite 520 Sioux City, 51101 822 Douglas Street, Suite 201 Sioux City, 51101
SUD and Problem Gambling Treatment Location	Siouxland Counseling Services	409 11th Street Sioux City, 51105
VA Health Center	Sioux City Vet Center	4280 Sergeant Road, Suite 104, Sioux City, IA 51106



## APPENDIX 4: Community Resources in Your Area

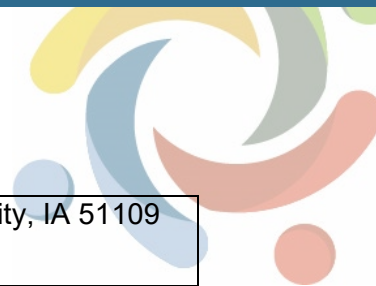
**Table 10.** *Sioux City Community Resource Type, Name of Business, and Address of Business*

Resource	Name	Address
Childcare Provider	English Head Start	1224 18th St, Sioux City, IA 51104
Childcare Provider	Gary Townsley	914 Dubuque St, Sioux City, IA 51105
Childcare Provider	Heather Welty	1610 La Plante Ave, Sioux City, IA 51109
Childcare Provider	Heidi Engel	3100 Jackson St, Sioux City, IA 51104
Childcare Provider	Native American Child Care Center	1735 Morningside Ave, Sioux City, IA 51106
Childcare Provider	Nayeli Ruiz	2919 S Cypress St, Sioux City, IA 51106
Childcare Provider	Nicole Musick	1717 180th St, Sioux City, IA 51106
Childcare Provider	Patricia Aquino	615 Iowa St, Sioux City, IA 51101
Childcare Provider	Penny Bekish	2011 Isabella St, Sioux City, IA 51103
Childcare Provider	Promiseland Preschool	4001 Indian Hills Dr, Sioux City, IA 51108
Childcare Provider	Rachel Treglia	2300 Collins St, Sioux City, IA 51103
Childcare Provider	Rebecca Brandt	4516 3rd Ave Upper, Sioux City, IA 51106
Childcare Provider	Amber Kollbaum	536 Forest View Ave, Sioux City, IA 51103
Childcare Provider	Amber McPeek	2001 George St, Sioux City, IA 51103
Childcare Provider	Amber Robinson	3510 Parkview Blvd, Sioux City, IA 51105
Childcare Provider	Angel House Child Care at Villa Maria	2302 West St, Sioux City, IA 51103
Childcare Provider	Angel House PS & School-Age Program	3002 Jackson St, Sioux City, IA 51104

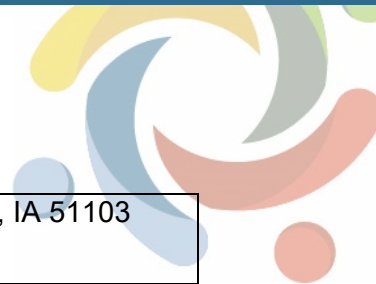


Childcare Provider	Angela M Palmer	4101 47th St, Sioux City, IA 51108
Childcare Provider	Angelica Olazaba	3700 28th St Lot 292, Sioux City, IA 51105
Childcare Provider	Anna Brewer	1660 W 27th St, Sioux City, IA 51103
Childcare Provider	Apple Tree Preschool and Learning Center	4224 Hickory Lane, Sioux City, IA 51106
Childcare Provider	Apple Tree Preschool and Learning Center	3835 Indian Hills Dr, Sioux City, IA 51104
Childcare Provider	Helping Hands Preschool & Childcare Inc	4405 Central St, Sioux City, IA 51108
Childcare Provider	Holly's Daycare	2509 Jones St, Sioux City, IA 51104
Childcare Provider	Holy Cross St Michael Center	4105 Harrison St, Sioux City, IA 51108
Childcare Provider	Irving Head Start	710 Iowa St, Sioux City, IA 51105
Childcare Provider	Jackson Recovery Centers Little Inspirations	3200 W 4th St, Sioux City, IA 51103
Childcare Provider	Jean Dailey	3104 Myers Ave, Sioux City, IA 51106
Childcare Provider	Jenna Kaufmann	6104 Pine View Dr, Sioux City, IA 51106
Childcare Provider	Jenny Kunze and Kristofer Kunze	1504 Rock St, Sioux City, IA 51105
Childcare Provider	Rita Taylor	4801 Derocher Path, Sioux City, IA 51106
Childcare Provider	Sanford Center	1700 Geneva Street, Sioux City, IA 51103
Childcare Provider	Sarah Webb	2205 Jackson St, Sioux City, IA 51104
Childcare Provider	Sharon Seaton	401 Paxton, Sioux City, IA 51105
Childcare Provider	Sheena Van Buren	2820 Jennings St, Sioux City, IA 51104





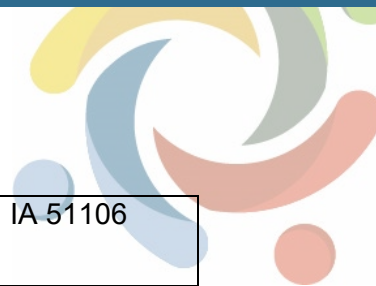
Childcare Provider	Ashley Borchers	1014 Fredette Ave, Sioux City, IA 51109
Childcare Provider	Ashley Davis	904 S Martha St, Sioux City, IA 51106
Childcare Provider	Autumn Hamann	2621 S Cleveland St, Sioux City, IA 51106
Childcare Provider	BB's Preschool & Childcare	3919 Jefferson St, Sioux City, IA 51108
Childcare Provider	Beyond the Bell-Bishop Heelan CYO	1000 Douglas, Sioux City, IA 51105
Childcare Provider	Beyond the Bell-Bryant	820 30th Street, Sioux City, IA 51104
Childcare Provider	Beyond The Bell-Clark	4315 Hamilton Blvd, Sioux City, IA 51104
Childcare Provider	Beyond The Bell-East Middle	5401 Lorraine Ave, Sioux City, IA 51106
Childcare Provider	Beyond The Bell-Hunt	1114 West 27th St, Sioux City, IA 51103
Childcare Provider	Beyond the Bell-Irving	901 Floyd Blvd, Sioux City, IA 51104
Childcare Provider	Beyond The Bell-Leeds	3919 Jefferson, Sioux City, IA 51108
Childcare Provider	Beyond the Bell-Liberty	1623 Rebecca St, Sioux City, IA 51103
Childcare Provider	Beyond the Bell-Loess Hills Elementary	1717 Casselman St, Sioux City, IA 51103
Childcare Provider	Beyond The Bell-Morningside	3601 Bushnell Ave, Sioux City, IA 51106
Childcare Provider	Beyond The Bell-Nodland	5000 Mayhew Ave, Sioux City, IA 51106
Childcare Provider	Beyond The Bell-North Middle	2101 Outer Dr N, Sioux City, IA 51108
Childcare Provider	Beyond the Bell-Perry Creek	3601 Country Blvd Blvd, Sioux City, IA 51104
Childcare Provider	Beyond The Bell-Riverside	2302 Riverside Blvd, Sioux City, IA 51109



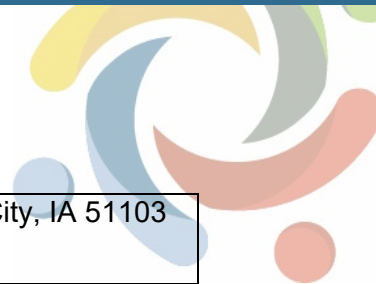
Childcare Provider	Beyond The Bell-Sacred Heart	5010 Military Rd, Sioux City, IA 51103
Childcare Provider	Beyond The Bell-Spalding Park Elementary	4101 Stone Ave, Sioux City, IA 51106
Childcare Provider	Beyond The Bell-Sunnyside	2700 S Maple St, Sioux City, IA 51106
Childcare Provider	Beyond The Bell-Unity	1901 Unity Ave, Sioux City, IA 51104
Childcare Provider	Beyond The Bell-West Middle	3301 W 19th St, Sioux City, IA 51101
Childcare Provider	Building Blocks Preschool & Child Care	1171 Outer Dr N, Sioux City, IA 51104
Childcare Provider	Calico Kids Preschool	1407 W 18th St, Sioux City, IA 51103
Childcare Provider	Kacie Vogel	3808 Osage Terr, Sioux City, IA 51104
Childcare Provider	Kaleigh Gormally	1602 30th St, Sioux City, IA 51104
Childcare Provider	Kandy Perkins	316 S Fawcett, Sioux City, IA 51103
Childcare Provider	Kasandra Smith	2316 S Saint Aubin St, Sioux City, IA 51106
Childcare Provider	Sloan Head Start	2711 South Helen, Sioux City, IA 51106
Childcare Provider	Sonshine Station Preschool	5601 Sunnybrook, Sioux City, IA 51106
Childcare Provider	St Paul's Lutheran Preschool	612 Jennings Street, Sioux City, IA 51101
Childcare Provider	Stella Sanford CDC - West High	2001 Casselman St, Sioux City, IA 51103
Childcare Provider	Stella Sanford Child Development Center	1724 Geneva St, Sioux City, IA 51103
Childcare Provider	Story Time Preschool & Child Care	2016 S Cecelia St, Sioux City, IA 51106
Childcare Provider	Story Time Preschool & Child Care Center	1114 Morningside Ave, Sioux City, IA 51106



Childcare Provider	Story Time Preschool and Child Care	1709 Pierce St, Sioux City, IA 51101
Childcare Provider	Sun Ridge Head Start	4701 Stone Ave, Sioux City, IA 51106
Childcare Provider	Tabbi Urquidi and John Urquidi	2232pueblo Ct, Sioux City, IA 51104
Childcare Provider	Carmen Guevara	412 W 35th St, Sioux City, IA 51104
Childcare Provider	Carol's Daycare	2801 Adel St, Sioux City, IA 51104
Childcare Provider	Kimberly Heck	615 38th St, Sioux City, IA 51104
Childcare Provider	Kimberly Vander Veen	926 Pacquette Ave, Sioux City, IA 51109
Childcare Provider	Kinder Cottage Preschool	3204 S Lakeport, Sioux City, IA 51106
Childcare Provider	LaTessa Zinn	3206 Nebraska St, Sioux City, IA 51104
Childcare Provider	Laura Santiago Camacho	2003 Iowa St, Souix City, IA 51104
Childcare Provider	Leisa Hilden	2120 W Palmer Ave, Sioux City, IA 51103
Childcare Provider	Tammy A Herrington	1635 W 5th St, Sioux City, IA 51103
Childcare Provider	Tanya Herman	2309 S Clinton St, Sioux City, IA 51106
Childcare Provider	Taylor Jasa	3617 Alsace St, Sioux City, IA 51104
Childcare Provider	The Learning Corner	301 W 7th St, Sioux City, IA 51103
Childcare Provider	Theodore's Academy Preschool and Childcare	3680 Glen Ellen Rd, Sioux City, IA 51106
Childcare Provider	Townview Head Start	432 W 4th St, Sioux City, IA 51103
Childcare Provider	Trisha Johnson	311 S Collins St, Sioux City, IA 51103



Childcare Provider	Twila Riessen and Dennis Riessen	3714 Stone Ave, Sioux City, IA 51106
Childcare Provider	Cynthia Kool	3301 Chalet Ct, Sioux City, IA 51106
Childcare Provider	Cynthia Cottrell	711 Pacific St, Sioux City, IA 51105
Childcare Provider	Cynthia Lamoureux	720 S Linn St, Sioux City, IA 51106
Childcare Provider	Daydream Daycare	715 33rd St, Sioux City, IA 51104
Childcare Provider	Deanna Guy	1542 Riverside Blvd, Sioux City, IA 51109
Childcare Provider	Debra Harris	301 5th St Apt 301, Sioux City, IA 51101
Childcare Provider	Debra Meier	2522 S Saint Aubin St, Sioux City, IA 51106
Childcare Provider	Desiree Schultz	2625 Rebecca St, Sioux City, IA 51103
Childcare Provider	Diann Love	1216 W 14th St, Sioux City, IA 51103
Childcare Provider	Eagles After Care	600 Gordan Dr, Sioux City, IA 51106
Childcare Provider	Mary Elizabeth Child Care & Preschool	814 Court St, Sioux City, IA 51105
Childcare Provider	Mary J Treglia Community House Preschool	900 Jennings St, Sioux City, IA 51105
Childcare Provider	Melissa Vakulskas	2536 S Cypress, Sioux City, IA 51106
Childcare Provider	Michelle Hansen	4336 Springfield St, Sioux City, IA 51108
Childcare Provider	Morningside Lutheran Preschool	700 S Martha St, Sioux City, IA 51106
Childcare Provider	Lisa Sherman	2515 S Glass St, Sioux City, IA 51106
Childcare Provider	Loess Hills Head Start	1717 Casselman St, Sioux City, IA 51103



Childcare Provider	Lori Johnson	2020 W Horne Ave, Sioux City, IA 51103
Childcare Provider	Maka Kabiro	2201 Gibson St #608, Sioux City, IA 51106
Childcare Provider	Maria Johnson-Schultz	1000 S Mulberry St, Sioux City, IA 51106
Childcare Provider	War Eagle Head Start	3232 W 4th St, Sioux City, IA 51103
Childcare Provider	Westside Head Start	1509 George St, Sioux City, IA 51103
Childcare Provider	Yellow Brick Road Preschool & Daycare	1312 Morningside Ave, Sioux City, IA 51106
College	Western Iowa Tech Community College	Western Iowa Tech Community College, Sioux City, IA
College	Briar Cliff University	Briar Cliff University, Sioux City, IA
College	Morningside College	Morningside College, Sioux City, IA
College	St. Luke's College	St. Luke's College, Sioux City, IA
Library	Sioux City Public Library	529 Pierce St, Sioux City, IA 51101
Library	Perry Creek Branch Library	2912 Hamilton Lower B, Sioux City, IA 51104
Library	Morningside Branch Library	4005 Morningside Ave, Sioux City, IA 51106
Park	Dorothy Pecaut Nature Center	4500 Sioux River Rd, Sioux City, IA 51109
Place of Worship	Word of Life Ministries Church	1478 Buchanan Ave, Sioux City, IA 51106
Place of Worship	Buchanan Avenue Baptist Church	1567 Buchanan Ave, Sioux City, IA 51106
Place of Worship	Cornerstone Faith Center	1625 Glen Ellen Rd, Sioux City, IA 51106
Place of Worship	Sioux City Gospel Mission	500 Bluff St, Sioux City, IA 51103



Place of Worship	Glendale Baptist Church	Sioux City, IA 51105
Place of Worship	Morningside Baptist Church	2841 S Olive St, Sioux City, IA 51106
Place of Worship	Faith Lutheran Church	3101 Hamilton Blvd, Sioux City, IA 51104
Place of Worship	Tabernacle Church of God	610 Center St, Sioux City, IA 51103
Place of Worship	Holy Trinity Greek Orthodox Church	900 6th St, Sioux City, IA 51101
Place of Worship	Mayflower Congregational Church	1407 W 18th St, Sioux City, IA 51103
Place of Worship	Gethsemane lutheran Church	Sioux City, IA 51103
Place of Worship	Crescent Park Methodist Church	2826 Myrtle St, Sioux City, IA 51103
Place of Worship	Sioux City Seventh Day Adventist Church	3636 Aspenwood St, Sioux City, IA 51104
Place of Worship	Sioux City Baptist Church	3222 Pawnee Pl, Sioux City, IA 51104
Place of Worship	Saint Michael Church	2223 Indian Hills Dr, Sioux City, IA 51104
Place of Worship	Center Church	Sioux City, IA 51103
Place of Worship	First Lutheran Church	3939 Cheyenne Blvd, Sioux City, IA 51104
Place of Worship	Christian Science Society	Sioux City, IA 51105
Place of Worship	Saint Thomas Episcopal Church	1200 Douglas St St, Sioux City, IA 51105
Place of Worship	Saint Mark Lutheran Church	5200 Glenn Ave, Sioux City, IA 51106
Place of Worship	Congregation Beth Shalom	815 38th St, Sioux City, IA 51104
Place of Worship	Central Assembly of God Church	2300 W 19th St, Sioux City, IA 51103
Place of Worship	First Covenant Church	1315 Indian Hills Dr, Sioux City, IA 51104
Place of Worship	Church of Christ	2111 W 6th St, Sioux City, IA 51103





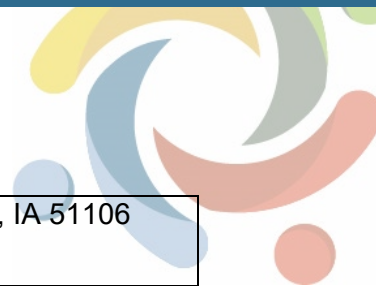
Place of Worship	Immanuel Lutheran Church	315 Hamilton Blvd, Sioux City, IA 51103
Place of Worship	Augustana Lutheran Church	600 Court St, Sioux City, IA 51101
Place of Worship	The Church of Jesus Christ of Latter Day Saints	1201 W Clifton Ave, Sioux City, IA 51104
Place of Worship	United Orthodox Synagogue	815 38th St, Sioux City, IA 51104
Place of Worship	First Unitarian Church	2508 Jackson St, Sioux City, IA 51104
Place of Worship	Blessed Sacrament Church	3012 Jackson St, Sioux City, IA 51104
Place of Worship	Trinity Lutheran Church	1122 Jackson St, Sioux City, IA 51105
Place of Worship	Calvary Lutheran Church	4400 Central St, Sioux City, IA 51108
Place of Worship	Loving Faith Fellowship	2631 S Walker St, Sioux City, IA 51106
Place of Worship	Morningside Church of Christ	Sioux City, IA 51106
Place of Worship	Mount Olive Baptist Church	Sioux City, IA 51105
Place of Worship	Faith Missionary Church	Sioux City, IA 51103
Place of Worship	Pho Mon Buddhist Temple	723 Myrtle St, Sioux City, IA 51103
Place of Worship	Morningside Bible Church	6100 Morningside Ave, Sioux City, IA 51106
Place of Worship	Calvary Episcopal Church	1308 S Cleveland St, Sioux City, IA 51106
Place of Worship	Mount Sinai Holiness Church	Sioux City, IA 51103
Place of Worship	Cathedral of the Epiphany	1000 Douglas St, Sioux City, IA 51105
Place of Worship	Trimble United Methodist Church	1424 27th St, Sioux City, IA 51104
Place of Worship	Sioux City Sanctuary	Sioux City, IA 51106
Place of Worship	Landmark Baptist Church	917 Court St, Sioux City, IA 51105



Place of Worship	Grace Church of the Nazarene	Sioux City, IA 51105
Place of Worship	Saint Casimirs Catholic Church	703 W 5th St, Sioux City, IA 51103
Place of Worship	Whitfield United Methodist Church	1319 W 5th St, Sioux City, IA 51103
Place of Worship	Our Lady of Grace Chapel	Our Lady of Grace Chapel, Sioux City, IA 51103
Place of Worship	Morningside Reformed Church	4327 Morningside Ave, Sioux City, IA 51104
Place of Worship	Our Saviour's Lutheran Church	3101 Hamilton Blvd, Sioux City, IA 51104
Place of Worship	Russian Orthodox Church	1100 Jones St, Sioux City, IA 51105
Place of Worship	First Evangelical Free Church	401 9th St, Sioux City, IA 51101
Place of Worship	Immaculate Conception Church	1212 Morningside Ave, Sioux City, IA 51106
Place of Worship	Grace Lutheran Church	1101 S Cornelia St, Sioux City, IA 51106
Place of Worship	El Reacimiento	Sioux City, IA 51105
Place of Worship	Saint Luke Lutheran Church	2039 S St Aubin St, Sioux City, IA 51106
Place of Worship	Mount Olive Baptist Church	Sioux City, IA 51105
Place of Worship	Reorganized Church of Jesus Christ of Latter Day Saints	Sioux City, IA 51106
Place of Worship	Mount Zion Baptist Church	1421 Geneva St, Sioux City, IA 51103
Place of Worship	Evangelical Orthodox Church	Sioux City, IA 51103
Place of Worship	Saint James United Methodist Church	2032 S Cypress St, Sioux City, IA 51106
Place of Worship	Open Bible Standard Church	Sioux City, IA 51101
Place of Worship	Rustin Avenue Methodist Church	Sioux City, IA 51105
Place of Worship	First United Methodist Church	First United Methodist Church, 1915 Nebraska St, Sioux City, IA 51104



Place of Worship	Christ Resurrection Church	Sioux City, IA 51103
Place of Worship	Saint Thomas Orthodox Church	1100 Jones St, Sioux City, IA 51105
Place of Worship	Bethel Baptist Church	4212 Gordon Dr, Sioux City, IA 51106
Place of Worship	Morningside Presbyterian Church	4327 Morningside Ave, Sioux City, IA 51104
Place of Worship	Floyd Boulevard Wesleyan Church	Sioux City, IA 51108
Place of Worship	New Creations Ministries	423 George St, Sioux City, IA 51103
Place of Worship	First Christian Church	Sioux City, IA 51104
Place of Worship	First Presbyterian Church	608 Nebraska St, Sioux City, IA 51101
Place of Worship	New Birth Church of God	Sioux City, IA 51103
Place of Worship	Sioux City Christian Reformed Church	601 Court St, Sioux City, IA 51101
Place of Worship	Central Baptist Church	4001 Indian Hills Dr, Sioux City, IA 51108
Place of Worship	Apostolic Faith Tabernacle Church	Sioux City, IA 51103
Place of Worship	Third Presbyterian Church	2925 Chicago Ave, Sioux City, IA 51106
Place of Worship	Saint Boniface Church	703 W 5th St, Sioux City, IA 51103
Place of Worship	Concordia Lutheran Church	2000 Military Rd, Sioux City, IA 51103
Place of Worship	First Congregational Church	4600 Hamilton Blvd, Sioux City, IA 51104
Place of Worship	Grace United Methodist Church	1735 Morningside Ave, Sioux City, IA 51106
Place of Worship	Good News Baptist Church	3200 W 19th St, Sioux City, IA 51103
Place of Worship	Wesley United Methodist Church	3700 Indian Hills Dr, Sioux City, IA 51104



Place of Worship	Morningside Lutheran Church	700 S Martha St, Sioux City, IA 51106
Place of Worship	Saint Joseph Church	Sioux City State Prairie Preserve, 8th St, Sioux City, IA 51103
Place of Worship	First Presbyterian Church	608 Nebraska St, Sioux City, IA 51101
School (K-12)	East High School	3200 S. Cypress St., Sioux City, IA 51106-4528
School (K-12)	North High School	4200 Cheyenne, Sioux City, IA 51104-4340
School (K-12)	West High School	2001 Casselman, Sioux City, IA 51103
School (K-12)	East Middle School	5401 Lorraine Ave, Sioux City, IA 51106-3837
School (K-12)	North Middle School	2101 Outer Dr N, Sioux City, IA 51108
School (K-12)	West Middle School	3301 W 19th St, Sioux City, IA 51103-1615
School (K-12)	Bryant Elementary School	3040 Jones Street, Sioux City, IA 51104
School (K-12)	Clark Early Childhood Center	4315 Hamilton Blvd, Sioux City, IA 51104
School (K-12)	Perry Creek Elementary School	3601 Country Club Blvd, Sioux City, IA 51104
School (K-12)	Hunt Elementary School	1114 W. 27th St, Sioux City, IA 51103
School (K-12)	Irving Elementary School	901 Floyd Blvd, Sioux City, IA 51105-1746
School (K-12)	Leeds Elementary School	3919 Jefferson St, Sioux City, IA 51108-1438
School (K-12)	Liberty Elementary School	1623 Rebecca Street, Sioux City, IA 51103
School (K-12)	Loess Hills Elementary	1717 Casselman Street, Sioux City, IA 51103
School (K-12)	Morningside Elementary	3601 Bushnell Ave, Sioux City, IA 51106



School (K-12)	Nodland Elementary School	5000 Mayhew Ave, Sioux City, IA 51106
School (K-12)	Riverside Elementary School	2220 Nash, Sioux City, IA 51109
School (K-12)	Spalding Park Elementary	4101 Stone Avenue, Sioux City, IA 51106
School (K-12)	Sunnyside Elementary School	2700 S Maple St, Sioux City, IA 51106-4127
School (K-12)	Unity Elementary School	1901 Unity Avenue, Sioux City, IA 51105-2500
School (K-12)	Siouxland Christian School	6000 Gordon Drive, Sioux City, IA 51106
School (K-12)	Holy Cross Blessed Sacrament School	3030 Jackson St, Sioux City, IA 51104
School (K-12)	Bishop Heelan Catholic High School	1231 Grandview Blvd., Sioux City, IA 51103
School (K-12)	Dual Language Academy	1000 Douglas St, Sioux City, IA 51005
School (K-12)	Sacred Heart School	5010 Military Rd, Sioux City, IA 51103
School (K-12)	Holy Cross St Michael School	4105 Harrison St, Sioux City, IA 51108
School (K-12)	Mater Dei Sch Immaculate Conception Center	3719 Ridge Ave, Sioux City, IA 51106
School (K-12)	Mater Dei School Nativity Center	4243 Natalia Way, Sioux City, IA 51106
School (K-12)	St Pauls Lutheran School	612 Jennings St, Sioux City, IA 51101
Workforce Development Center	Sioux City IowaWORKS Office	2508 4th Street, Sioux City, IA, 51101