



Iowa Refugee Health Program

Data Snapshot, 2016

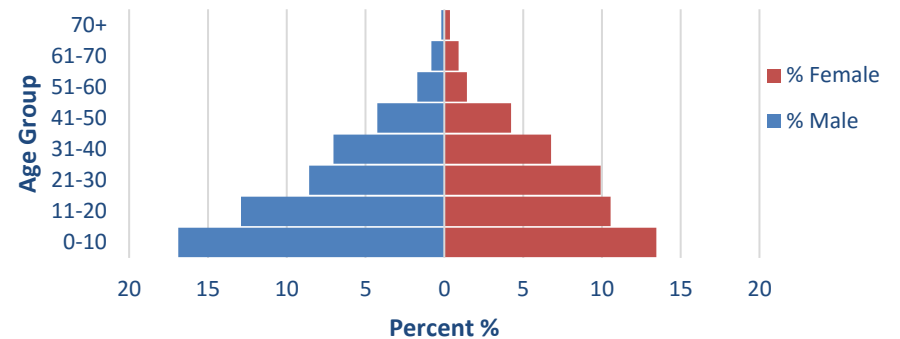
The data depicted in this report is compiled using information provided by the Office of Refugee Resettlement (ORR), the Iowa Department of Public Health (IDPH) and medical clinics throughout Iowa. It includes demographic information and health assessment outcomes for primary refugees who arrived in Iowa from January 1-December 31 of 2016.*

Quick Statistics: Demographics

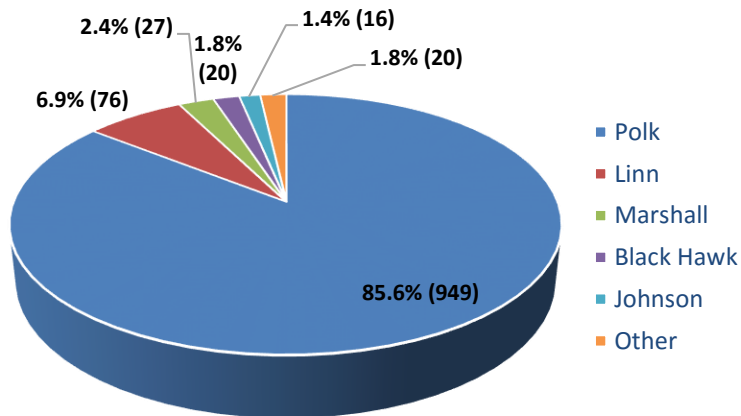
- 1105 primary refugee arrivals in 2016
- 33% increase from 2015
- 48% female, 52% male
- 54% refugee youth < 21 years of age
- Highest numbers arriving from Democratic Republic of Congo, Burma/Myanmar, Bhutan, and Syria

Population Pyramid - Primary Refugee Arrivals

Age at time of arrival, Gender

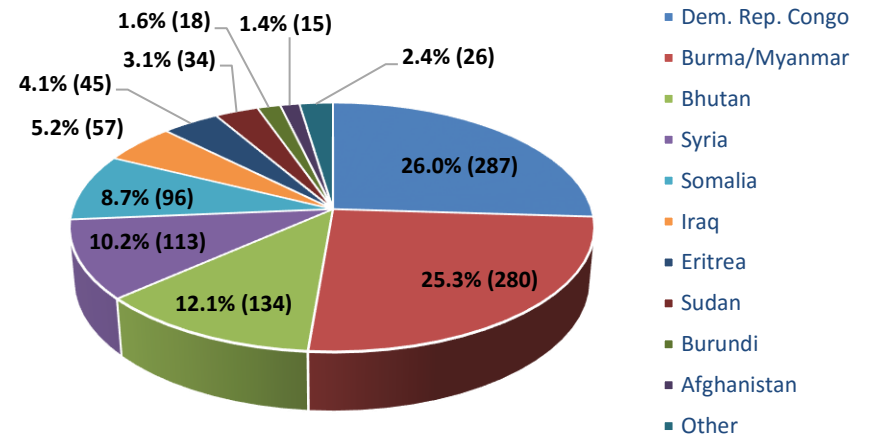


Primary Refugee Arrivals by Initial County of Resettlement



Other includes Allamakee, Buena Vista, Clarke, Dallas, Louisa, Story, and Wapello Counties

Iowa Primary Refugees by Country of Nationality



Other includes Nepal, Ethiopia, El Salvador, India, and Kuwait

* Iowa's arrival numbers also include immigrants entering the United States on special immigrant visas (SIVs) from Iraq and Afghanistan. These individuals are given assistance with resettlement and integration, and are eligible to receive ORR benefits and services for the same time period as refugees.

Quick Statistics: Initial Health Assessment Outcomes

- 96.4% of new arrivals completed initial refugee health assessments
- 55.7% of assessments completed within 30 days of arrival
- 37 cases of hepatitis B, 176 cases of latent tuberculosis, and 2 cases of active TB disease identified
- 29 children (< 17 years of age) with elevated blood lead levels

Common referrals:

- Dental: 329
- Vision: 89
- Audiology/ENT: 21
- Obstetrics/Gynecology: 20
- Gastroenterology: 13
- Cardiology: 8

Common health concerns:

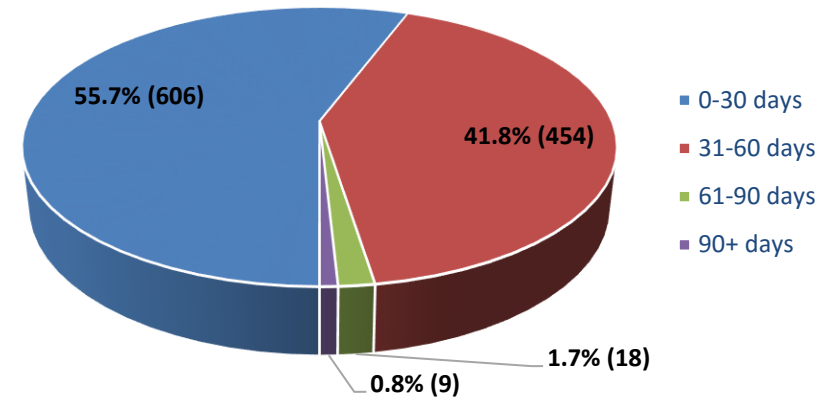
- Dental caries/poor dentition: 178
- Nutritional concerns (overweight, underweight, malnutrition, anemia): 171
- Vision problems: 82
- Hypertension: 39
- Mental Health: 26
- Tobacco Abuse: 24
- Hearing Problems: 24

Contact Information:

Iowa Refugee Health Program
 Lucas State Office Building
 321 East 12th Street
 Des Moines, IA 50319-0075
 515-281-0433

refugeehealth@idph.iowa.gov
www.idph.iowa.gov/immtdb/rh

Initial Refugee Health Assessment Timeframe



Completed Initial Health Assessments by Clinic

