



# Child Health Resources Webinar

## ► Speakers:

### ❖ Iowa Family Support Network Coordinated Intake

Lance Roorda, Iowa Department of Public Health

### ❖ Behavioral Health Intervention Services

Mark Cowan, Orchard Place

### ❖ Integrated Health Home Project

Sonni Vierling, Amanda Duncan, Debra Senger, Lindsey Strable

- Orchard Place

➤ *Facilitator: Analisa Pearson, Iowa Department of Public Health*



# Iowa Family Support Network Coordinated Intake

- ▶ Lance Roorda, LMSW, Service Coordinator



# Behavioral Health Intervention Services

- ▶ **Mark Cowan, LISW, Vice President of PACE**



# Iowa's Pediatric Integrated Health Homes

**Pediatric Integrated Health Program, Orchard Place**

**Sonni Vierling, Vice President**

**Amanda Duncan, Supervisor and Care Coordinator**

**Debra Senger, Family Peer Support Specialist**

**Lindsey Strable, Nurse Care Manager**



# Presentation Objectives

- ▶ Purpose and structure of Iowa's integrated health home model
- ▶ Outcomes for children enrolled in PIHH
- ▶ Referral process to PIHH services

# Why the Integrated Health Home

- ▶ 2010 Patient Protection & Affordable Care Act (ACA)
- ▶ Build on medical home model for severe behavioral health conditions
- ▶ “Whole-person” philosophy
- ▶ In Iowa, IHH is designed to engage community-based mental health providers as health homes

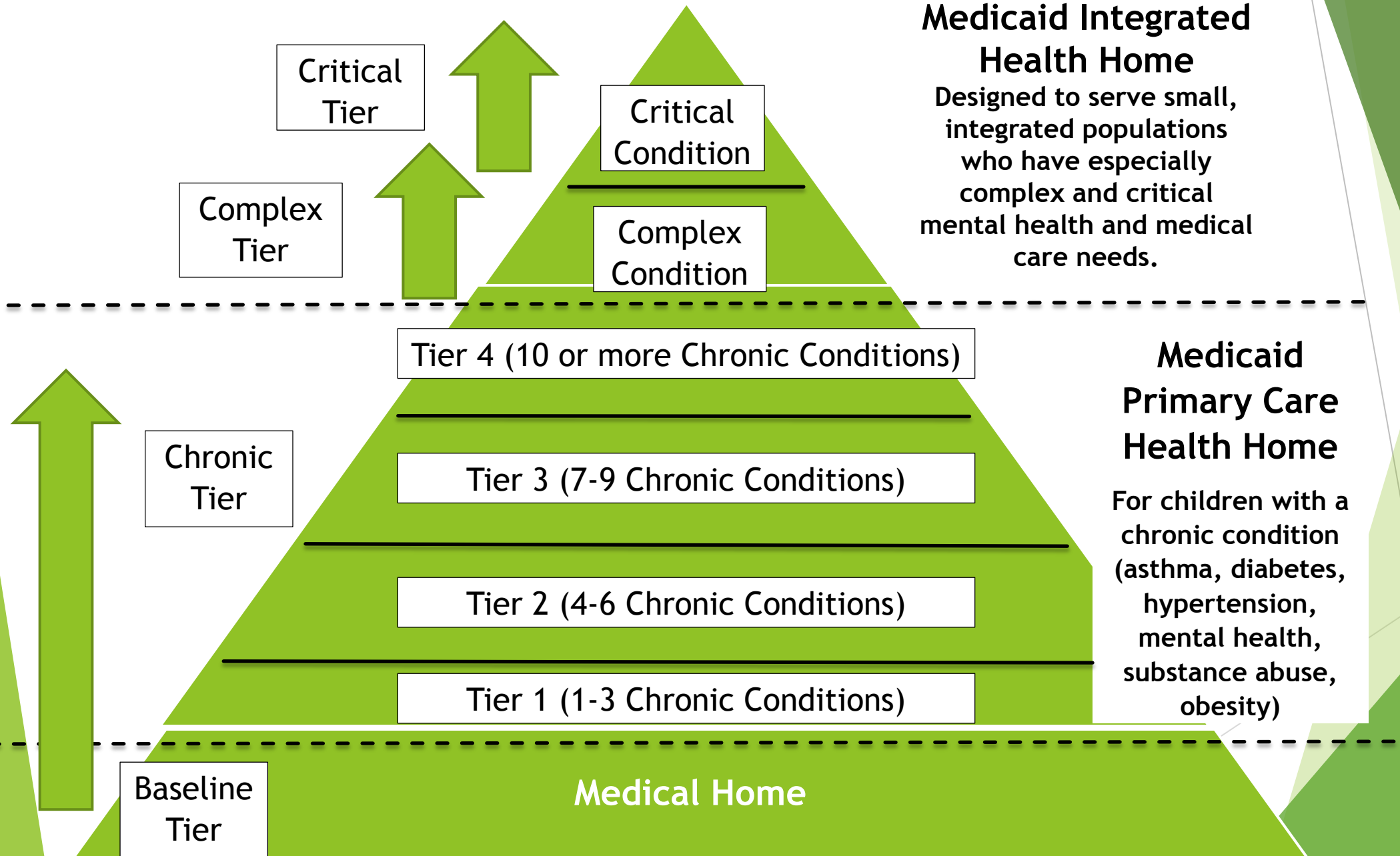
## Goal of health homes is...

*“to expand the traditional medical home models to build linkages to other community and social supports, and to enhance coordination of medical and behavioral health care, in keeping with the needs of persons with multiple chronic illnesses.”*

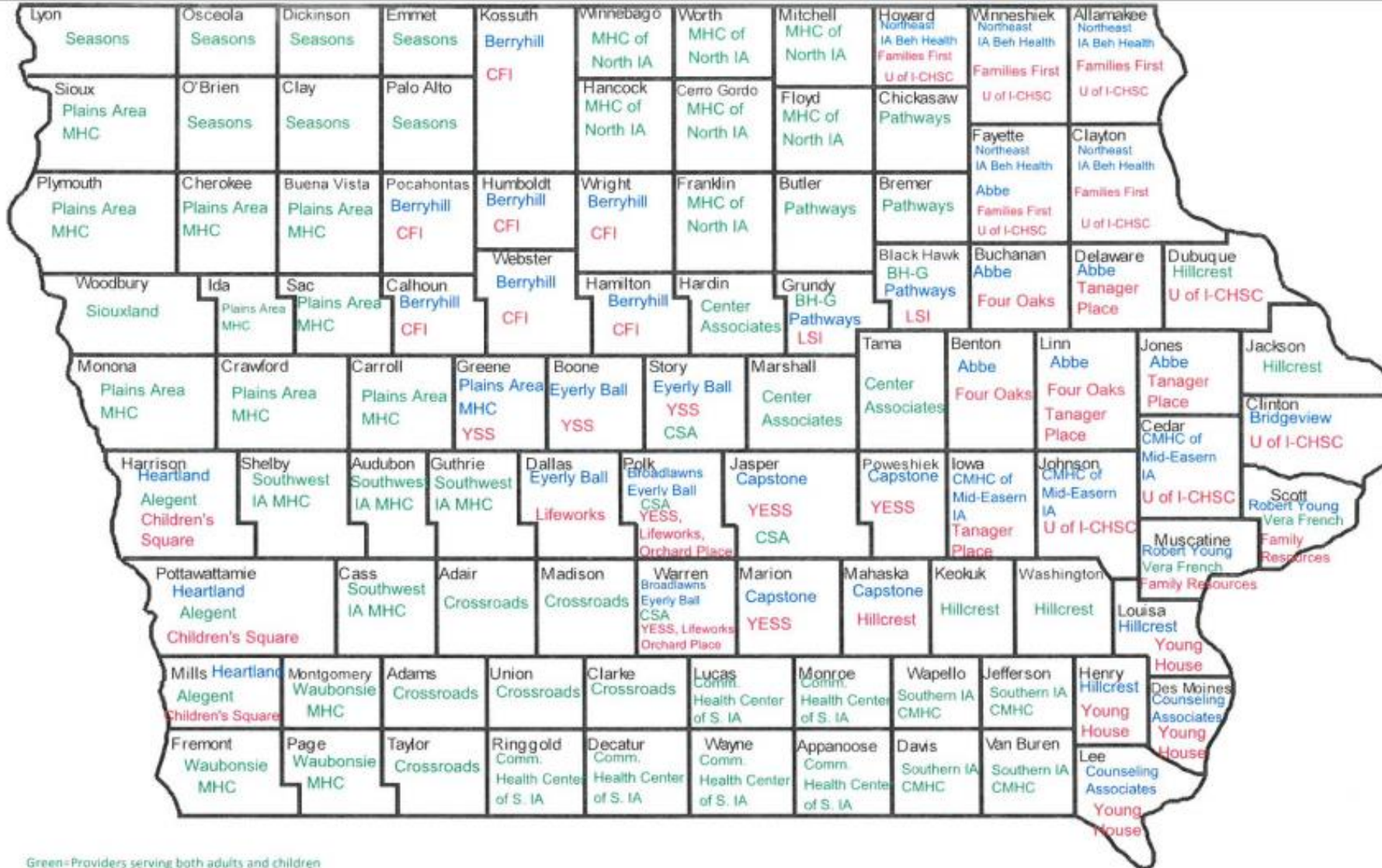
~ Center for Medicare and Medicaid Services



# Pediatric Patient System of Care



# Adult and Pediatric Integrated Health Homes



Green=Providers serving both adults and children

Blue=Providers serving only adults

Red=Providers serving only children





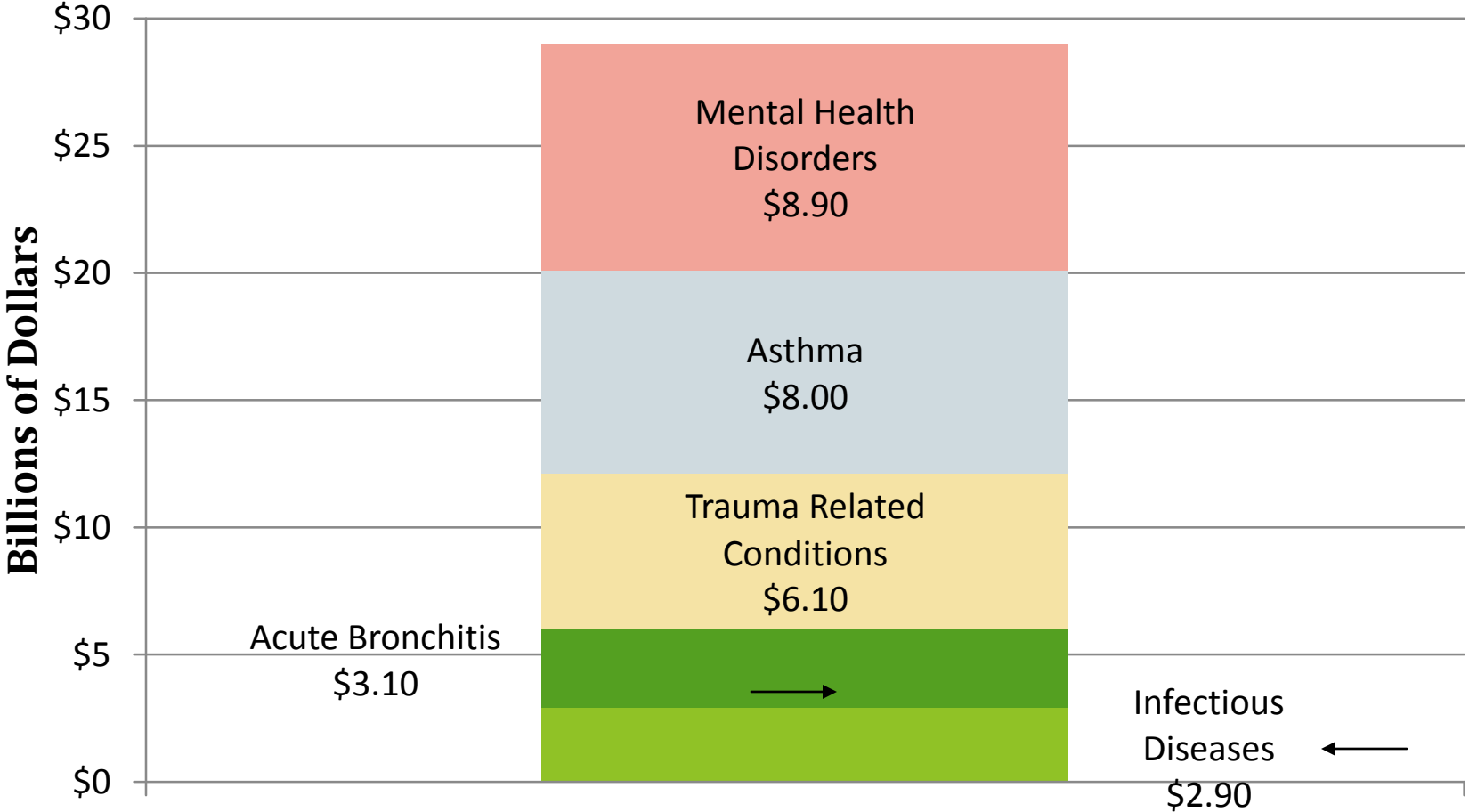
# What We Know about Critical and Complex Mental Health Issues for Pediatric Patients



- 1 in 5 children/youth birth to 18 years old has a diagnosable mental health disorder
- 1 in 10 children/youth has a serious mental health problem that is severe enough to impair functioning at home, in school, or in the community
- Onset of major mental illness may occur as early as 7-11 years old
- Roughly 50% of all lifetime mental health disorders start by mid-teens

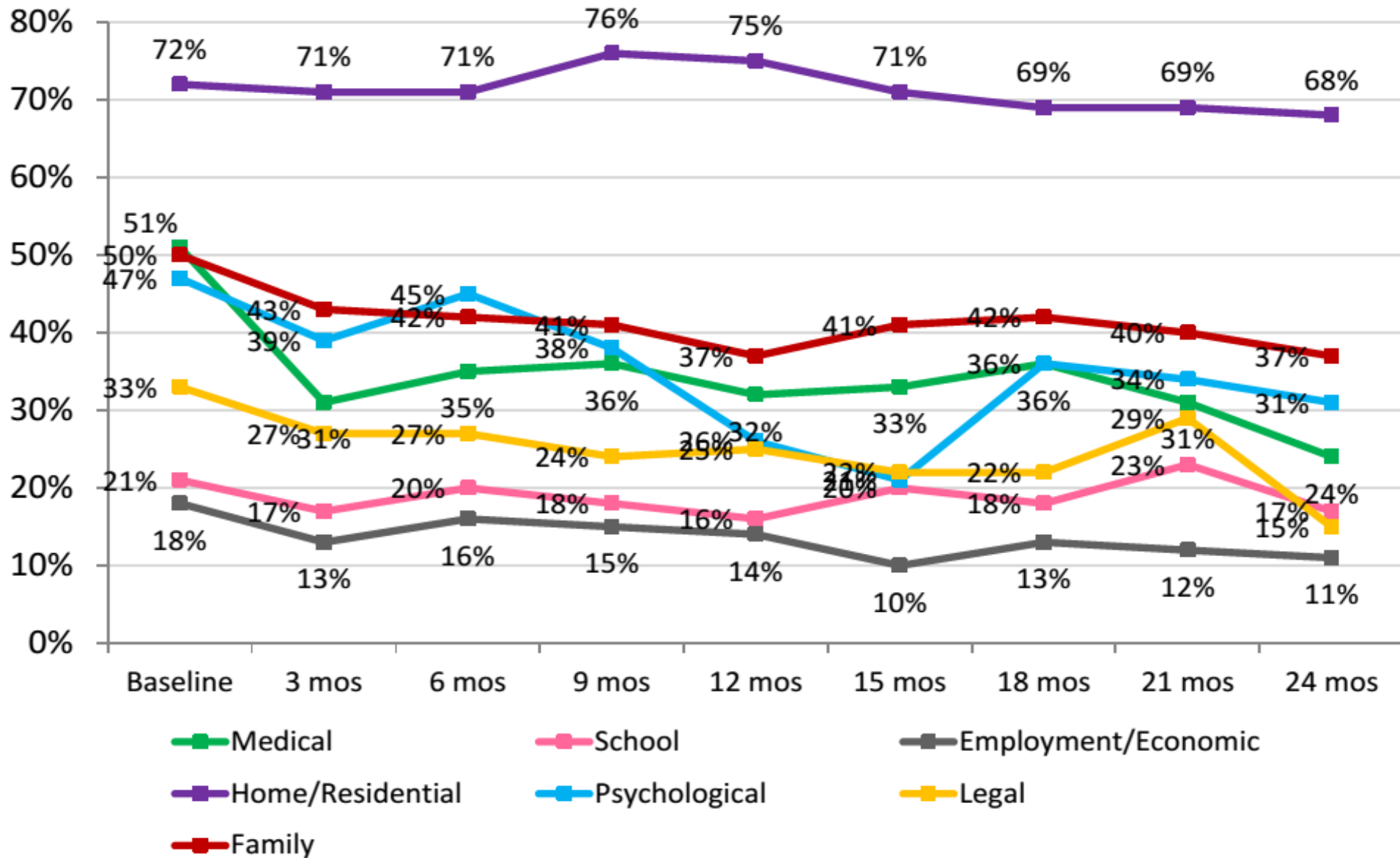


# Costliest Health Conditions of Childhood

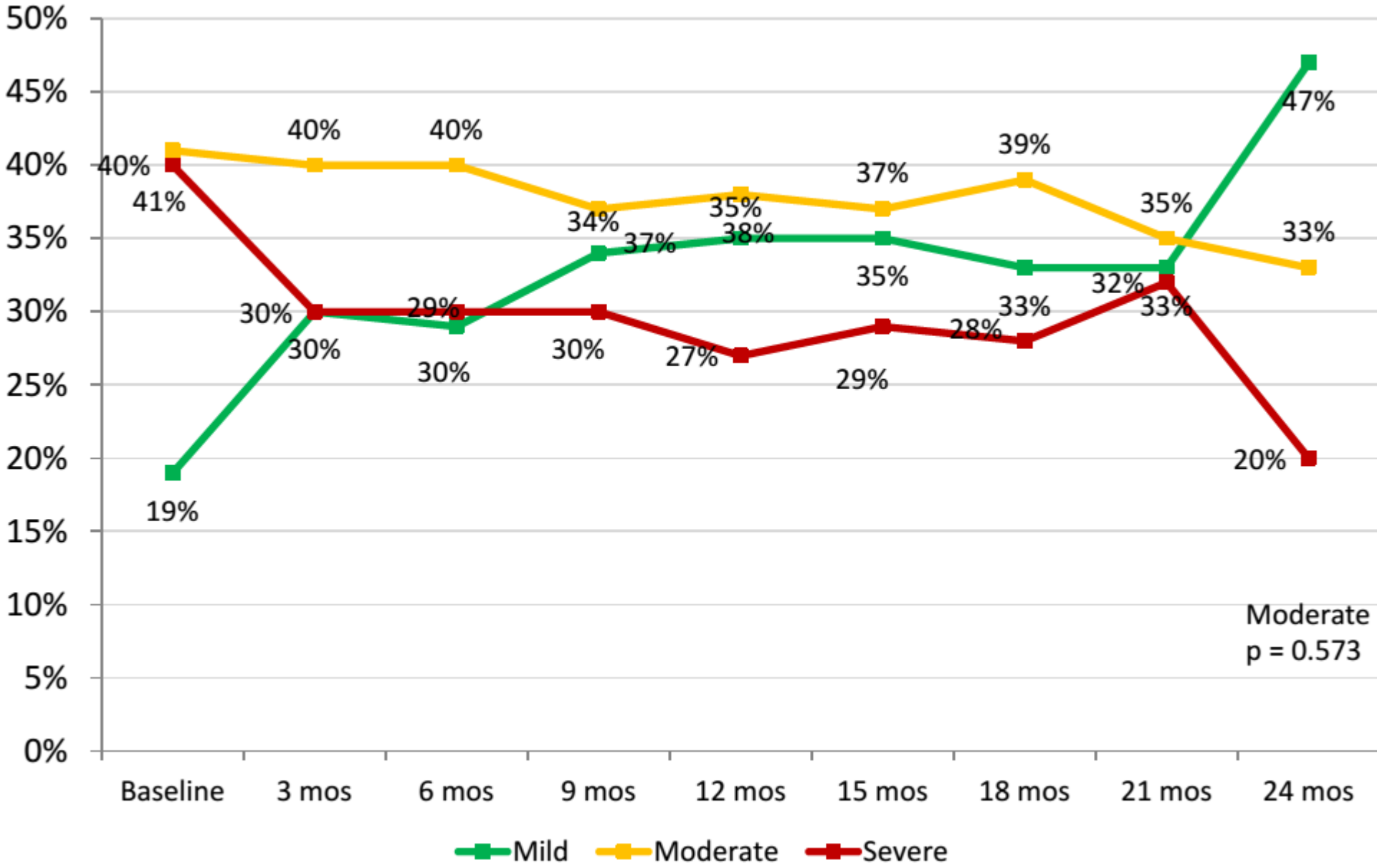


Agency for Healthcare Research and Quality, 2008

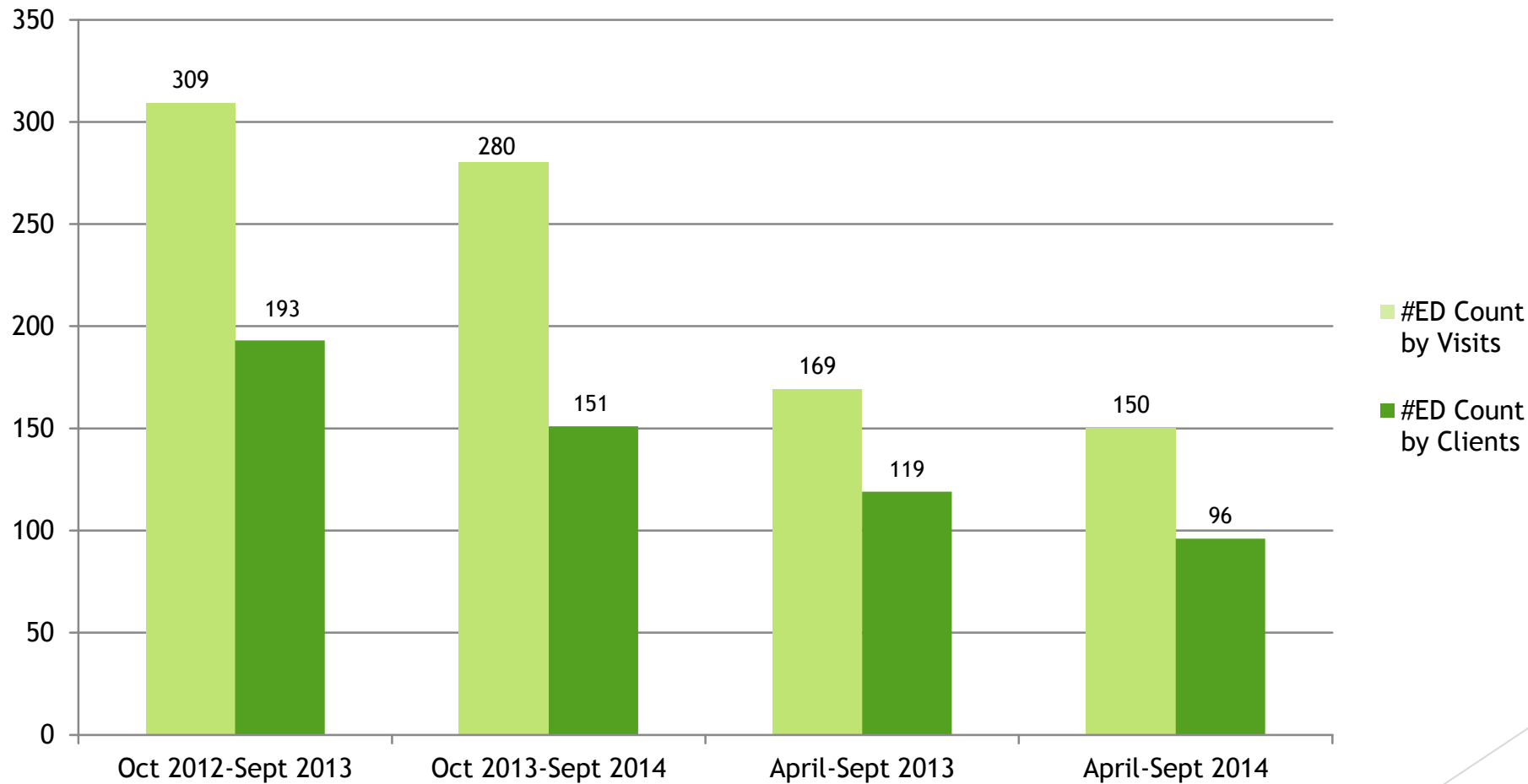
# Orchard Place IHP Outcome Data



# Orchard Place IHP Outcome Data



# Emergency Department Use Reductions for Mental Health Reasons by IHH Members



# What Parents of Children with Mental Health Diagnoses Said They Need from Providers & PIHH Agencies

## More Education

- ▶ Explain child's diagnosis in language that is easily understood
- ▶ More education to families about available services

## Advocacy and Support

- ▶ Advocate and be a support person for child's educational needs at school
- ▶ Help connect families together
- ▶ Ask for more parental input as experts on their child's needs

## Transitions between Levels of Care

- ▶ Help with a successful discharge back home. Start this process as soon as possible.

Family Focus Group Recommendations, Integrated Health Program, Orchard Place, August 2014



# What is Integrated Care?

- ▶ A team of experts working alongside families to support and respond to their child's physical, emotional, and social well-being.
- ▶ It is a whole health approach that bridges providers across disciplines to better coordinate services and act as one team on behalf of the child.

# How do Integrated Health Homes Help Families?

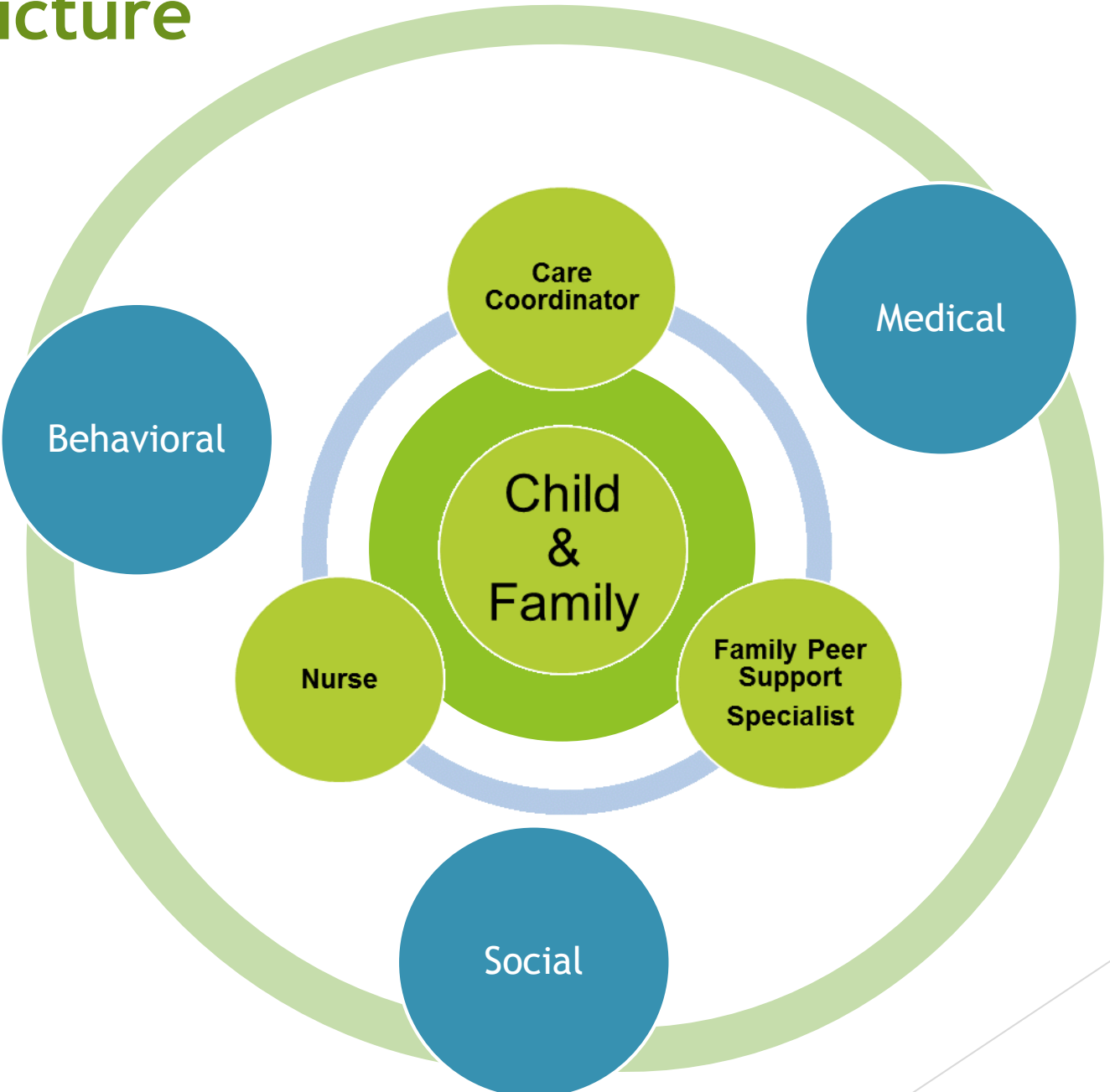
- ▶ Connect to community resources;
- ▶ Work alongside families to develop mental and physical health goals for their child;
- ▶ Help parents learn how to advocate for their child's educational needs;
- ▶ Bridge care across providers on behalf of child;
- ▶ Share education about their child's diagnosis & medications.



# How Does IHH Bridge Services Across Providers?

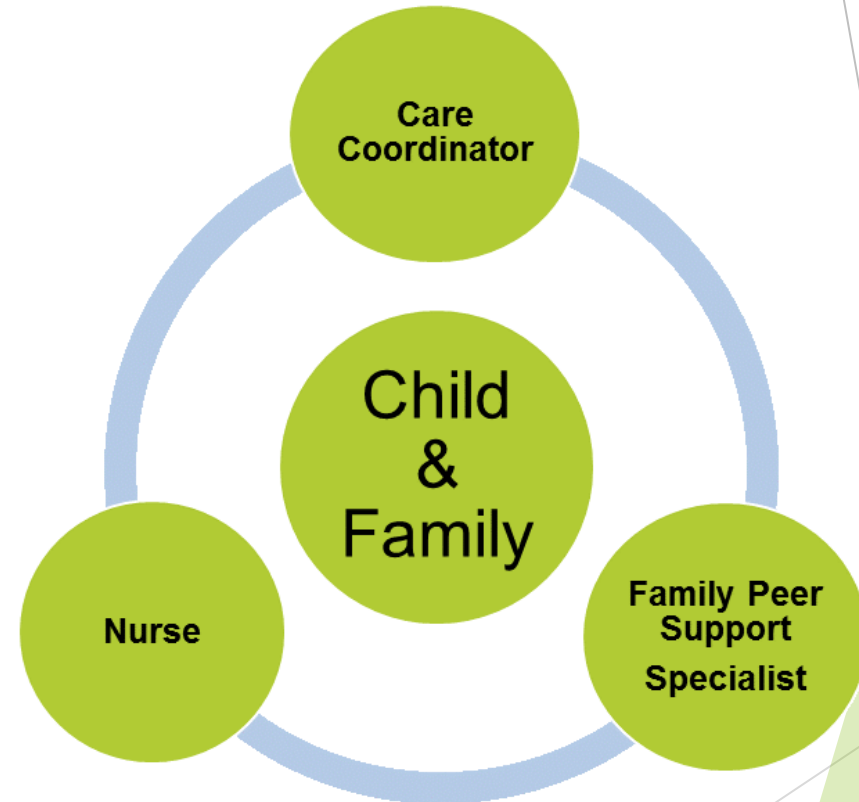
- ▶ Communicate urgent changes in family environment or other emergency situations;
- ▶ Convene wrap around meetings with providers and other family-identified natural supports to work on family's goals.

# PIHH Structure



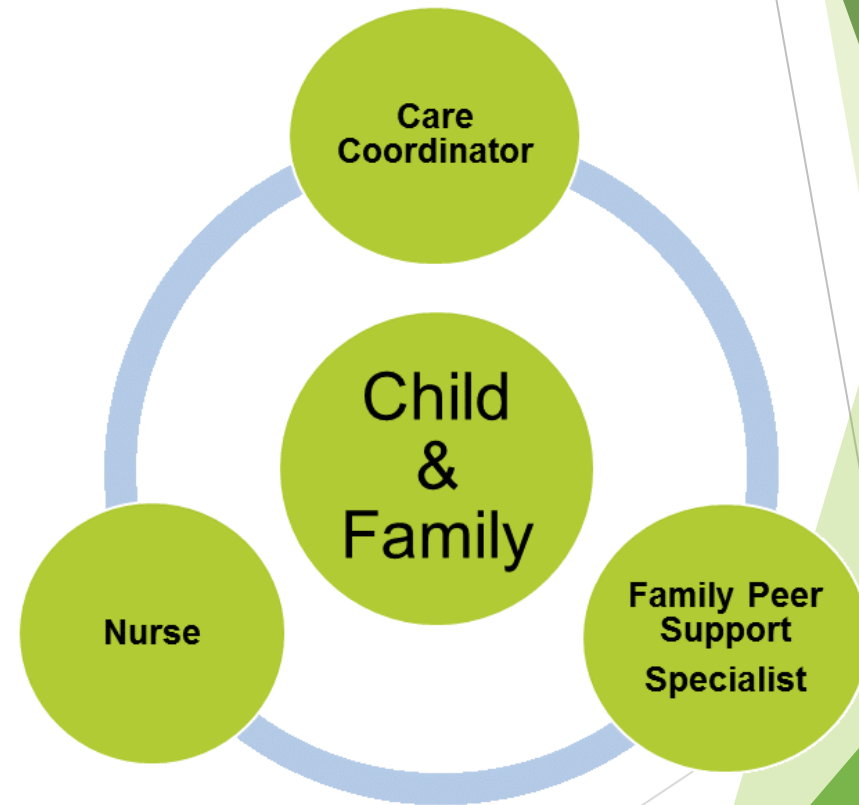
# Care Coordinator

- ▶ Resource specialist
- ▶ Serves as the communication hub between providers on behalf of the family.
- ▶ Convenes wrap around meetings.



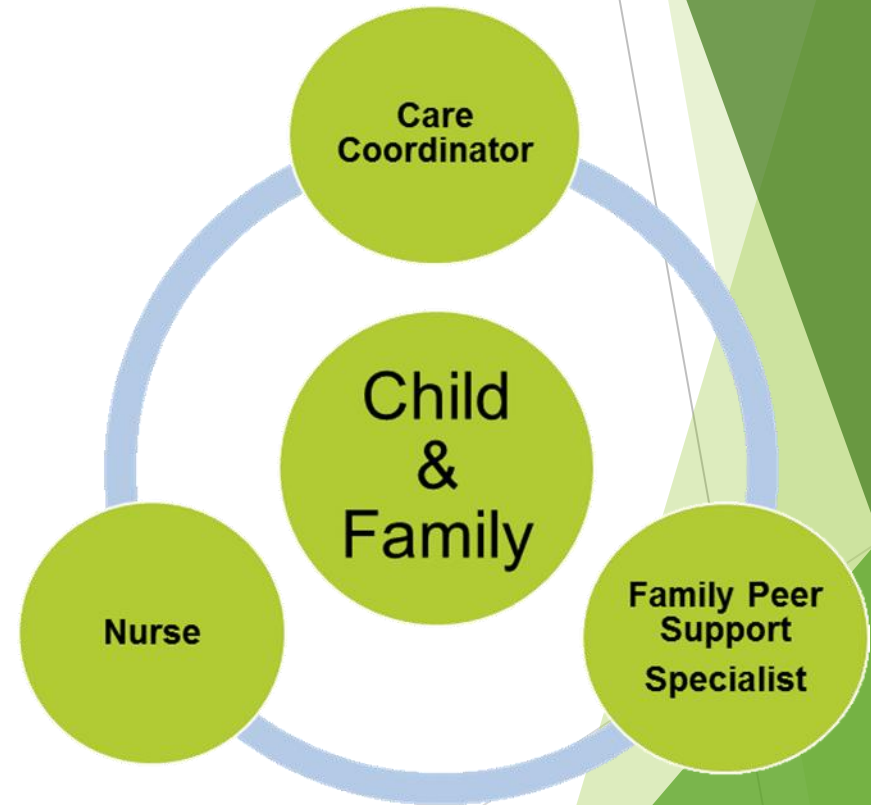
# Family Peer Support Specialist

- ▶ Parents of children with mental health diagnoses
- ▶ Supports and empowers parents by relating through lived experience.



# Nurse Care Manager

- ▶ Medical health professional
- ▶ Serves as a bridge between child's primary care physician, family, and other providers
- ▶ Educates families on child's health needs and supports physical health goals



# What PIHH Can Assist with for Children in Critical or Complex Tiers

- Financial Stress
- Family/Relationship Stress
- Domestic Abuse
- Family Support Services
- Housing Resources
- Mental Health Issues
- Parent Isolation
- School Issues
- Parent Education Programs
- Food Assistance
- Family Planning
- Medicaid/Dental/*hawk-i* Insurance Needs
- Substance Abuse
- Transportation Concerns
- Caregiver Mental Health Concerns

# PIHH Eligibility

- ▶ Medicaid Eligible
- ▶ Under age 18
- ▶ Mental health diagnosis and functional impairment (does not include autism, or in some cases, ADHD for the Children's Mental Health Waiver program)

# How to Refer

For provider contacts visit:

<http://www.magellanofiowa.com/for-providers-ia/integrated-health-home.aspx>





**Thank you!**

**Questions?**